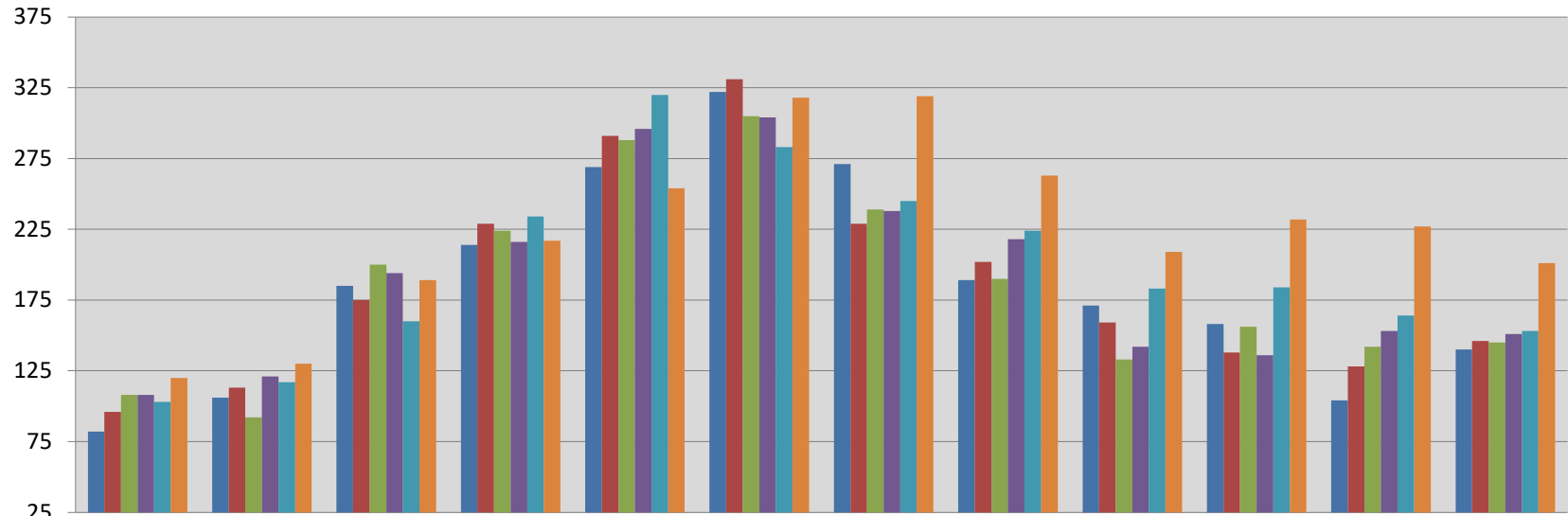




Single Family Homes Sales Per Month in Boone County, Missouri

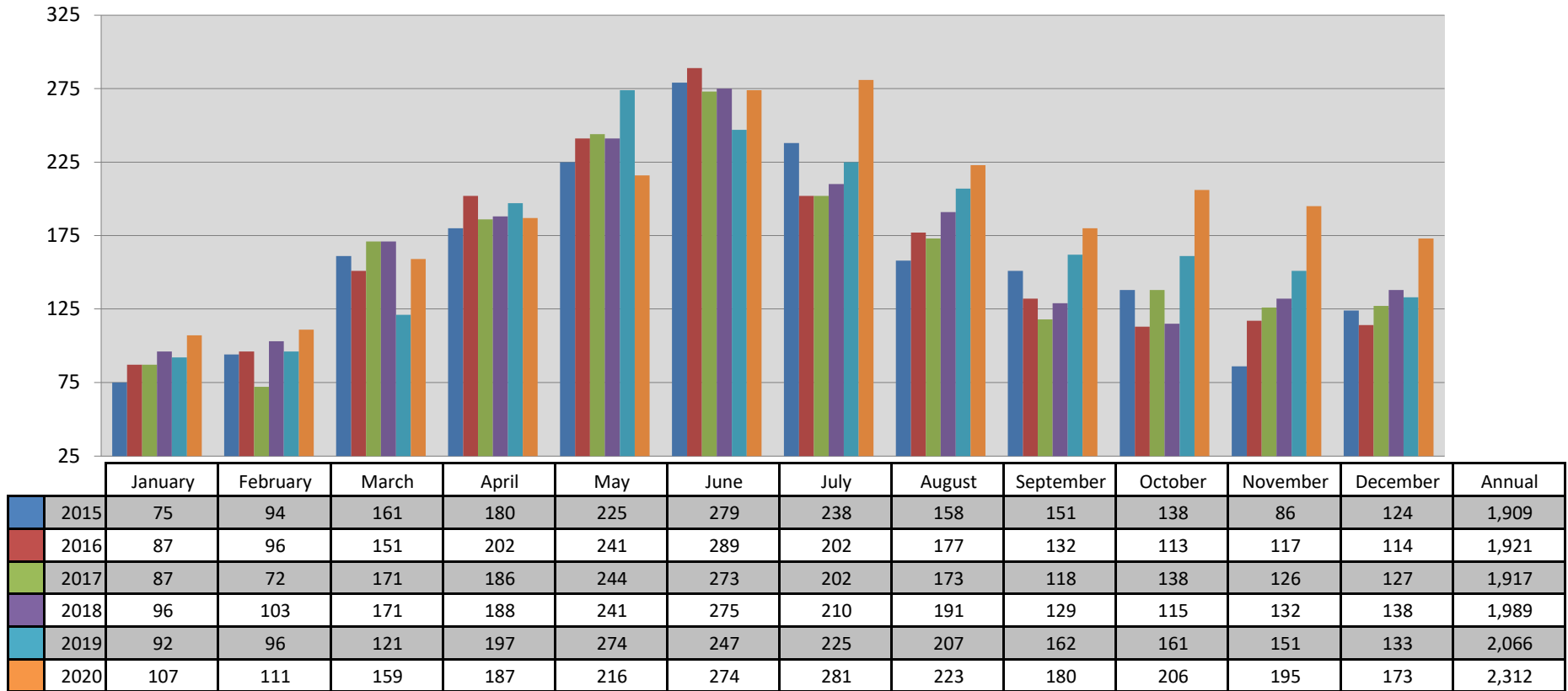


| | January | February | March | April | May | June | July | August | September | October | November | December | Annual |
|------|---------|----------|-------|-------|-----|------|------|--------|-----------|---------|----------|----------|--------|
| 2015 | 82 | 106 | 185 | 214 | 269 | 322 | 271 | 189 | 171 | 158 | 104 | 140 | 2,211 |
| 2016 | 96 | 113 | 175 | 229 | 291 | 331 | 229 | 202 | 159 | 138 | 128 | 146 | 2,237 |
| 2017 | 108 | 92 | 200 | 224 | 288 | 305 | 239 | 190 | 133 | 156 | 142 | 145 | 2,222 |
| 2018 | 108 | 121 | 194 | 216 | 296 | 304 | 238 | 218 | 142 | 136 | 153 | 151 | 2,277 |
| 2019 | 103 | 117 | 160 | 234 | 320 | 283 | 245 | 224 | 183 | 184 | 164 | 153 | 2,370 |
| 2020 | 120 | 130 | 189 | 217 | 254 | 318 | 319 | 263 | 209 | 232 | 227 | 201 | 2,679 |

This representation is based in whole or in part on the data supplied by the Columbia Board of REALTORS® (CBOR). CBOR does not guarantee nor is in any way responsible for its accuracy. Data maintained by CBOR may not reflect all real estate activity in the market.



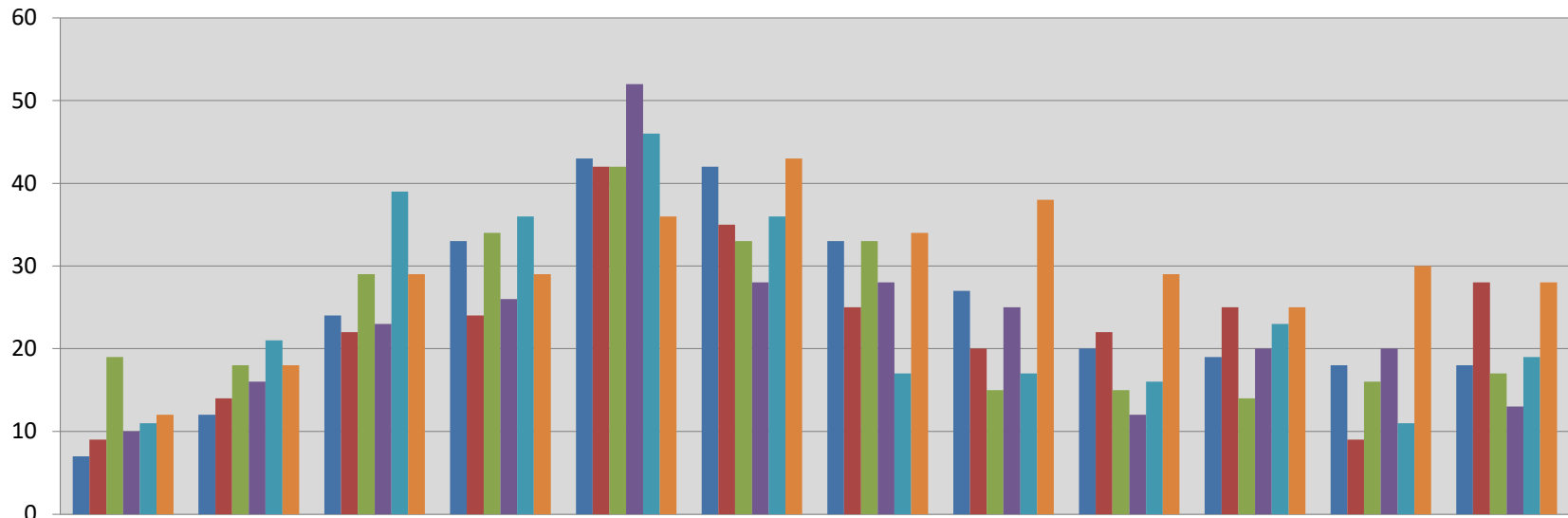
Existing Single Family Homes Sales Per Month in Boone County, Missouri



This representation is based in whole or in part on the data supplied by the Columbia Board of REALTORS® (CBOR). CBOR does not guarantee nor is in any way responsible for its accuracy. Data maintained by CBOR may not reflect all real estate activity in the market.



New Construction Single Family Homes Sales Per Month in Boone County, MO

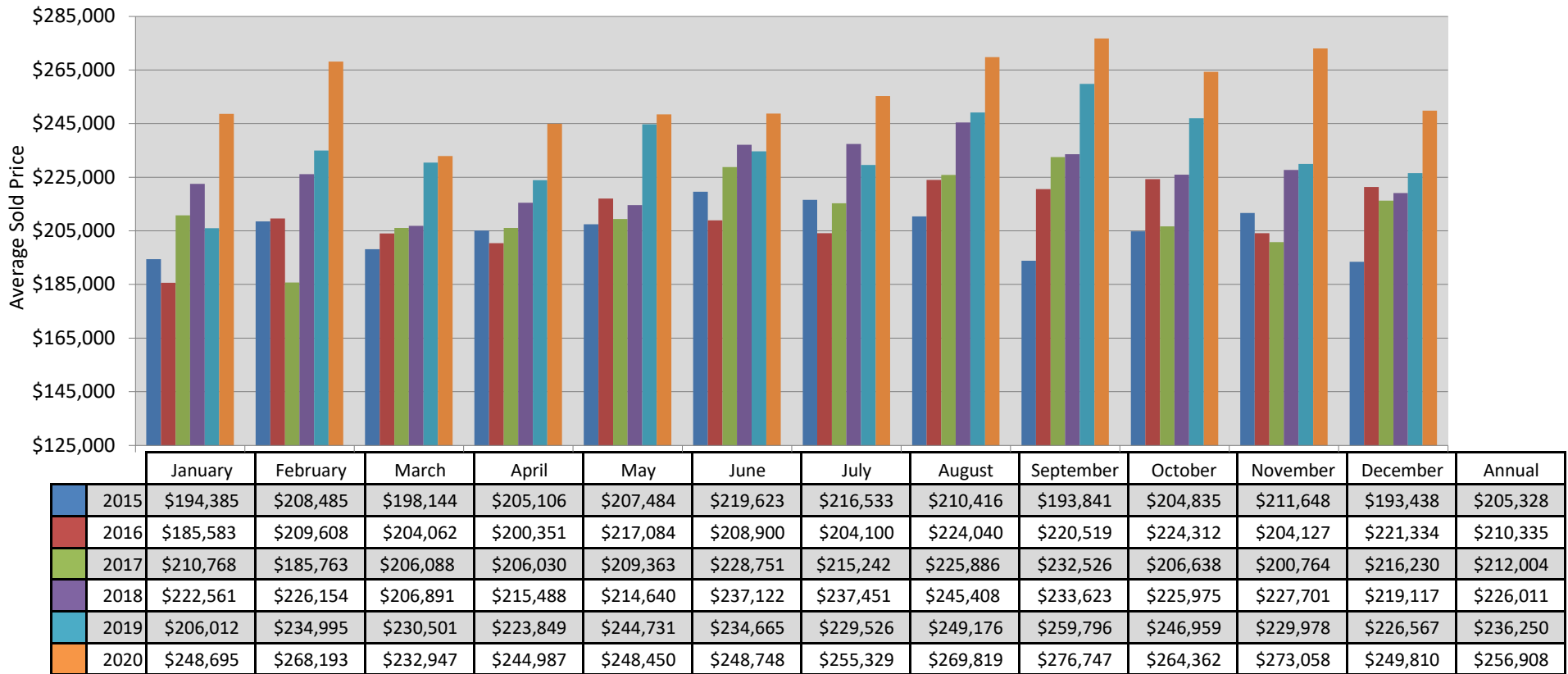


| | January | February | March | April | May | June | July | August | September | October | November | December | Annual |
|------|---------|----------|-------|-------|-----|------|------|--------|-----------|---------|----------|----------|--------|
| 2015 | 7 | 12 | 24 | 33 | 43 | 42 | 33 | 27 | 20 | 19 | 18 | 18 | 296 |
| 2016 | 9 | 14 | 22 | 24 | 42 | 35 | 25 | 20 | 22 | 25 | 9 | 28 | 275 |
| 2017 | 19 | 18 | 29 | 34 | 42 | 33 | 33 | 15 | 15 | 14 | 16 | 17 | 285 |
| 2018 | 10 | 16 | 23 | 26 | 52 | 28 | 28 | 25 | 12 | 20 | 20 | 13 | 273 |
| 2019 | 11 | 21 | 39 | 36 | 46 | 36 | 17 | 17 | 16 | 23 | 11 | 19 | 292 |
| 2020 | 12 | 18 | 29 | 29 | 36 | 43 | 34 | 38 | 29 | 25 | 30 | 28 | 351 |

This representation is based in whole or in part on the data supplied by the Columbia Board of REALTORS® (CBOR). CBOR does not guarantee nor is in any way responsible for its accuracy. Data maintained by CBOR may not reflect all real estate activity in the market.



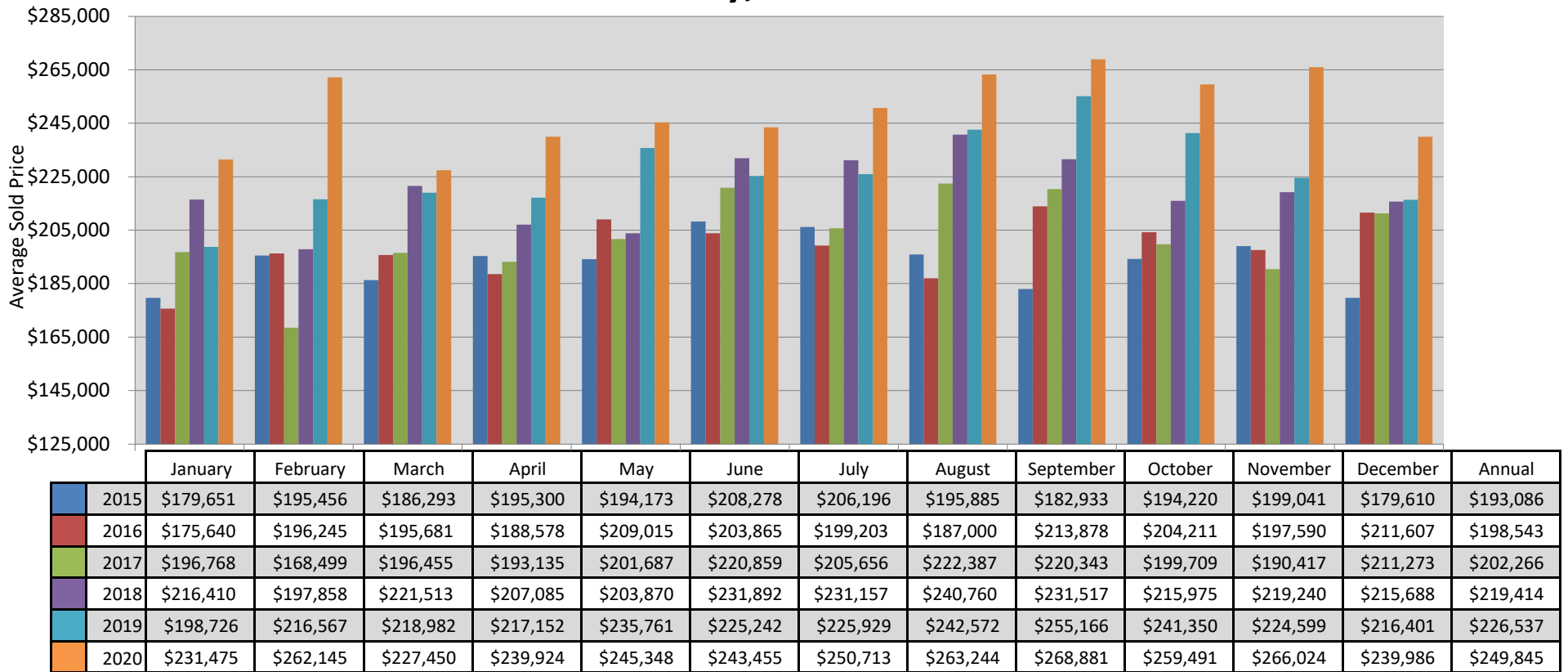
Single Family Homes Average Sold Price Per Month in Boone County, Missouri



This representation is based in whole or in part on the data supplied by the Columbia Board of REALTORS® (CBOR). CBOR does not guarantee nor is in any way responsible for its accuracy. Data maintained by CBOR may not reflect all real estate activity in the market.



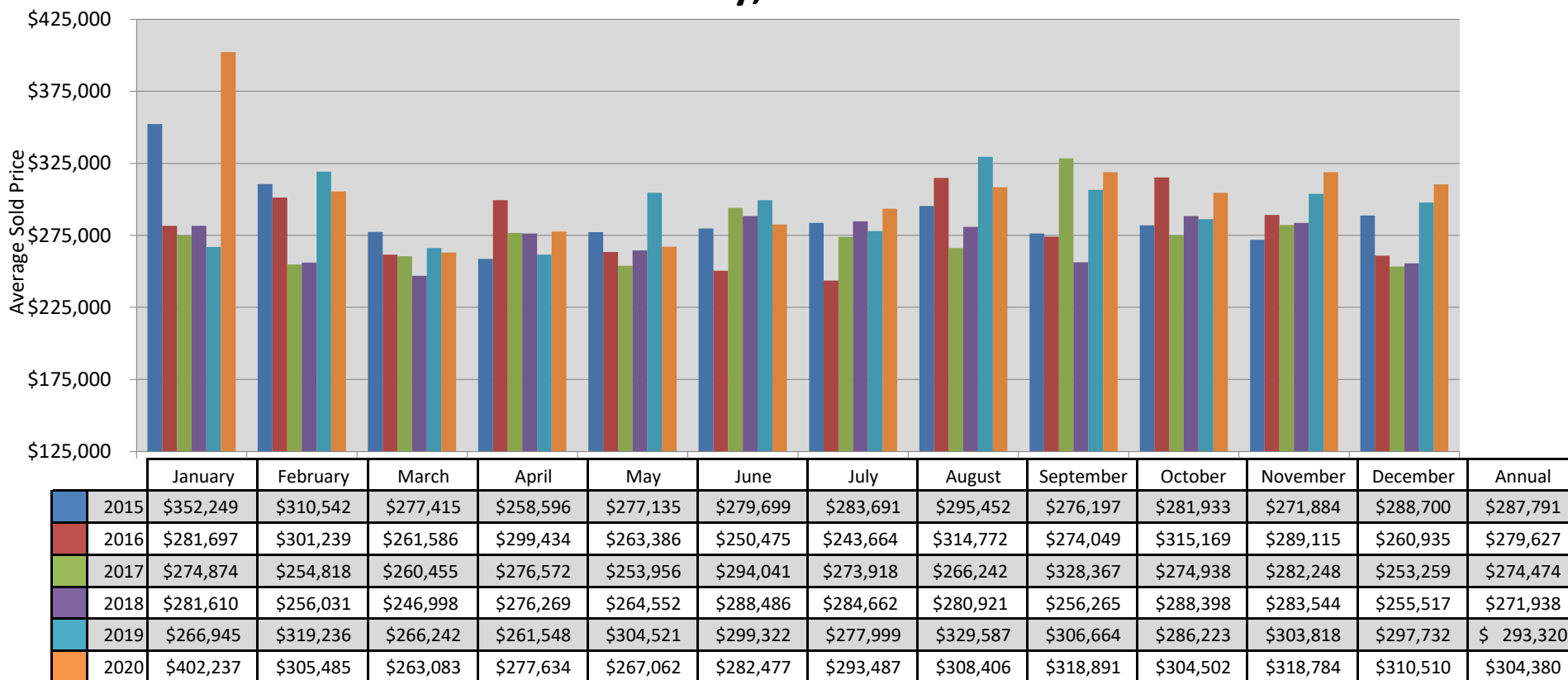
Existing Single Family Homes Average Sold Price Per Month in Boone County, Missouri



This representation is based in whole or in part on the data supplied by the Columbia Board of REALTORS® (CBOR). CBOR does not guarantee nor is in any way responsible for its accuracy. Data maintained by CBOR may not reflect all real estate activity in the market.



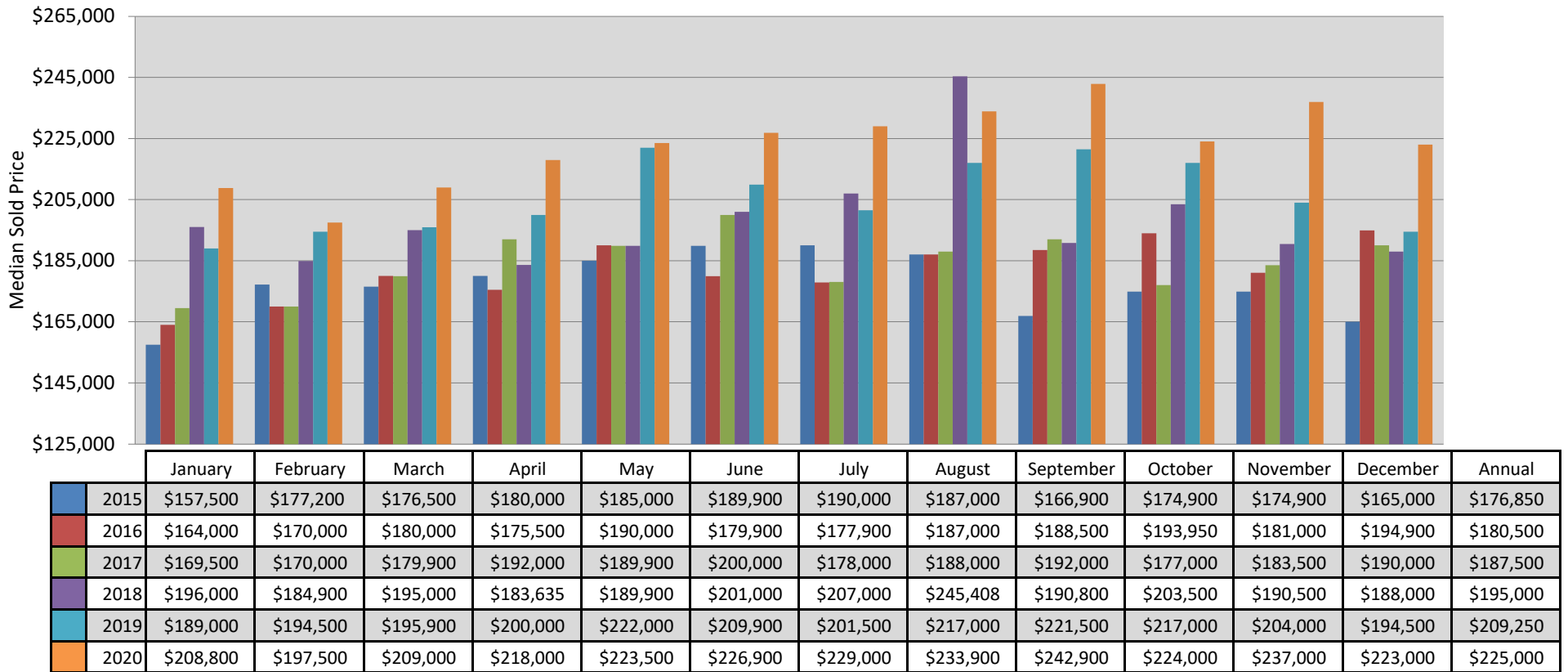
New Construction Single Family Homes Average Sold Price Per Month in Boone County, Missouri



This representation is based in whole or in part on the data supplied by the Columbia Board of REALTORS® (CBOR). CBOR does not guarantee nor is in any way responsible for its accuracy. Data maintained by CBOR may not reflect all real estate activity in the market.



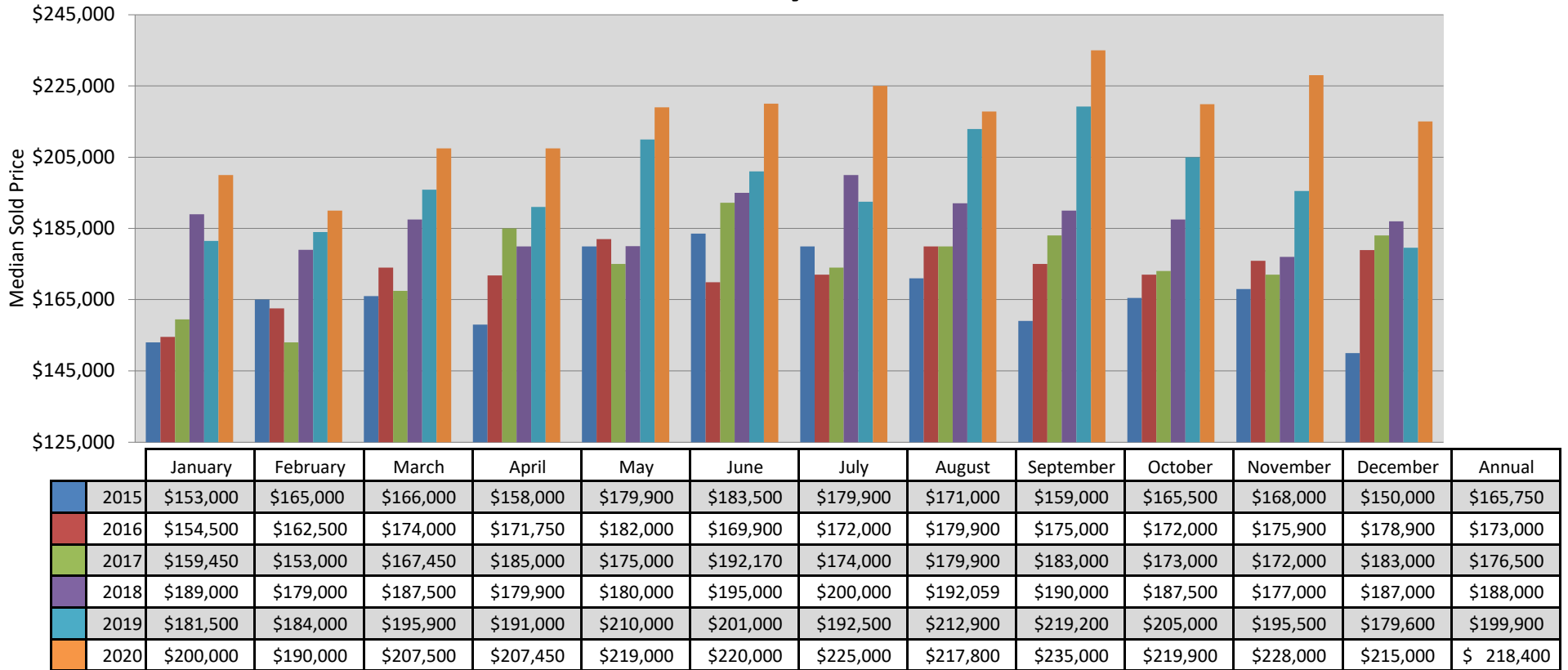
Single Family Homes Median Sold Price Per Month in Boone County, Missouri



This representation is based in whole or in part on the data supplied by the Columbia Board of REALTORS® (CBOR). CBOR does not guarantee nor is in any way responsible for its accuracy. Data maintained by CBOR may not reflect all real estate activity in the market.



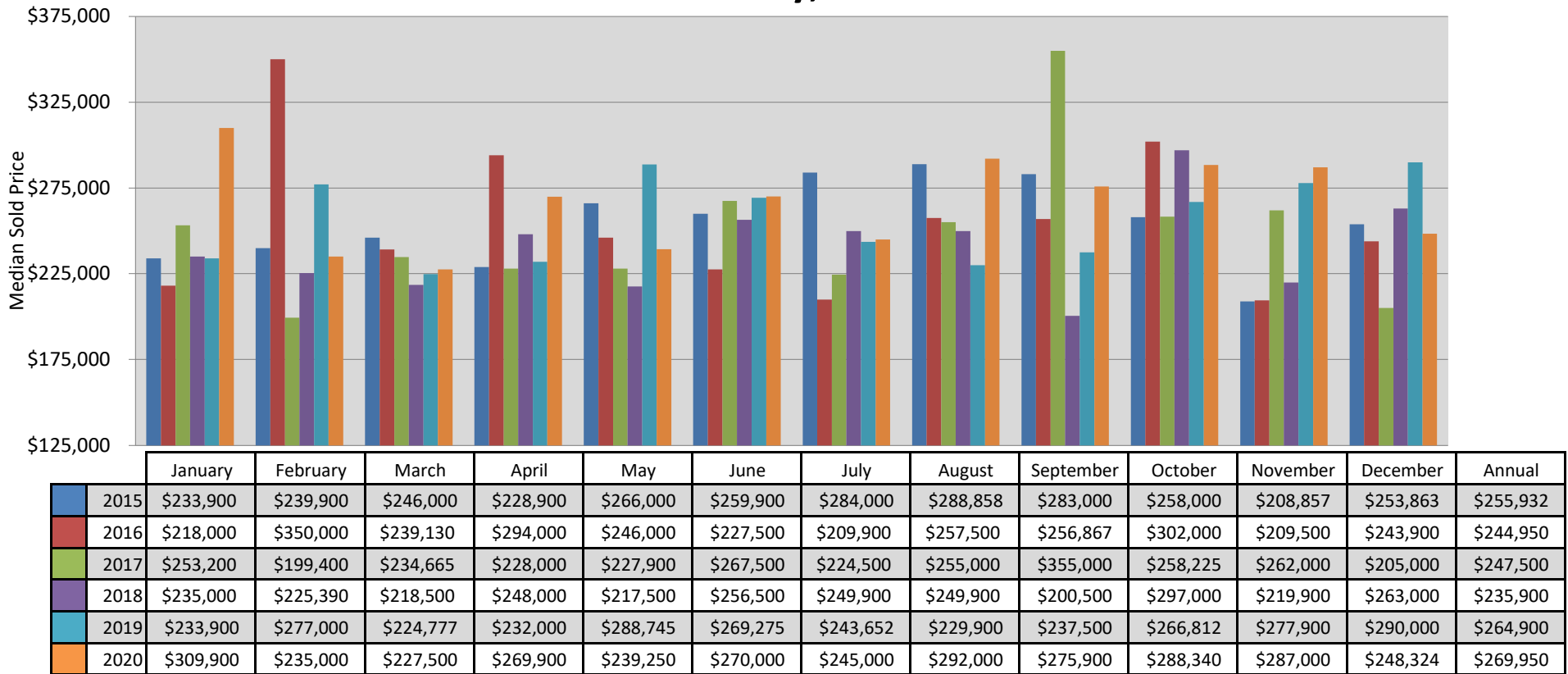
Existing Single Family Homes Median Sold Price Per Month in Boone County, Missouri



This representation is based in whole or in part on the data supplied by the Columbia Board of REALTORS® (CBOR). CBOR does not guarantee nor is in any way responsible for its accuracy. Data maintained by CBOR may not reflect all real estate activity in the market.



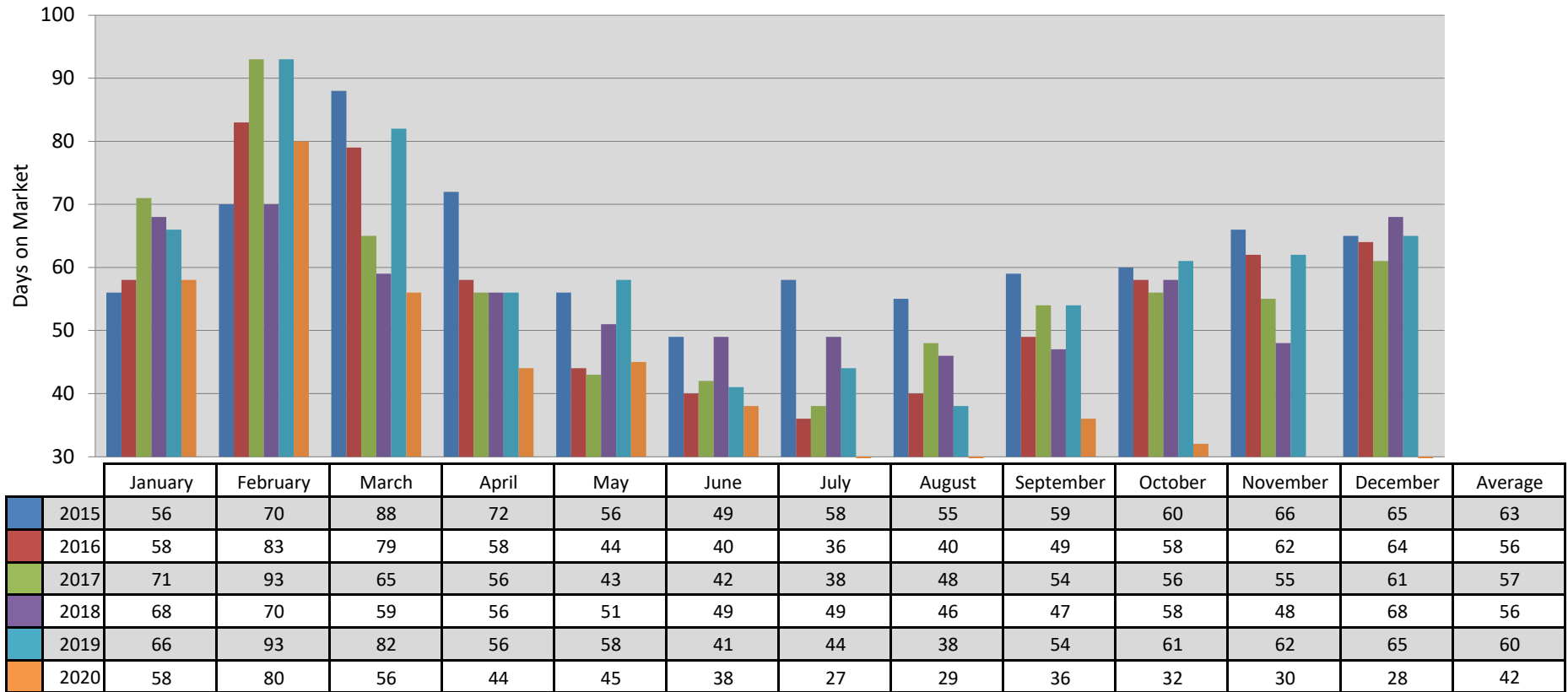
New Construction Single Family Homes Median Sold Price Per Month in Boone County, Missouri



This representation is based in whole or in part on the data supplied by the Columbia Board of REALTORS® (CBOR). CBOR does not guarantee nor is in any way responsible for its accuracy. Data maintained by CBOR may not reflect all real estate activity in the market.



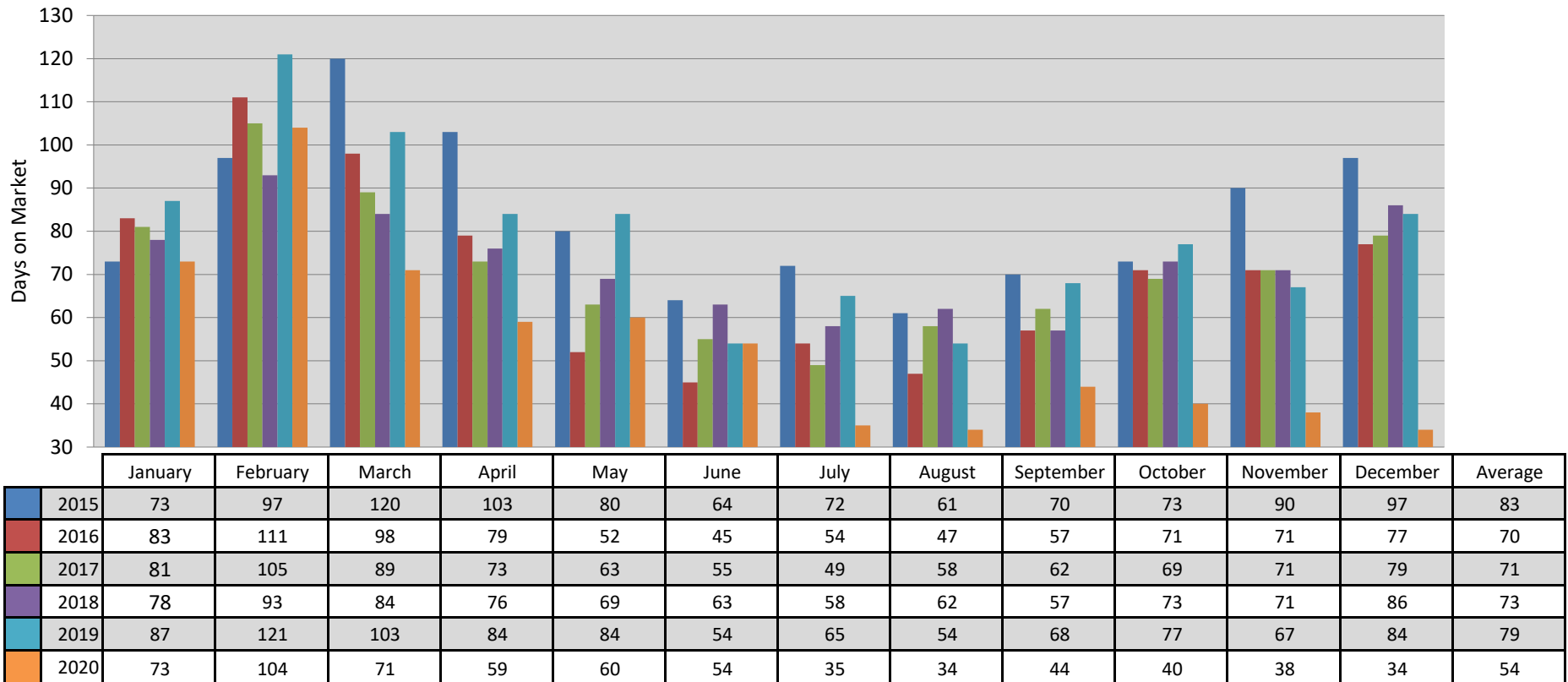
Single Family Homes Average Days on Market Per Month in Boone County, MO



This representation is based in whole or in part on the data supplied by the Columbia Board of REALTORS® (CBOR). CBOR does not guarantee nor is in any way responsible for its accuracy. Data maintained by CBOR may not reflect all real estate activity in the market.



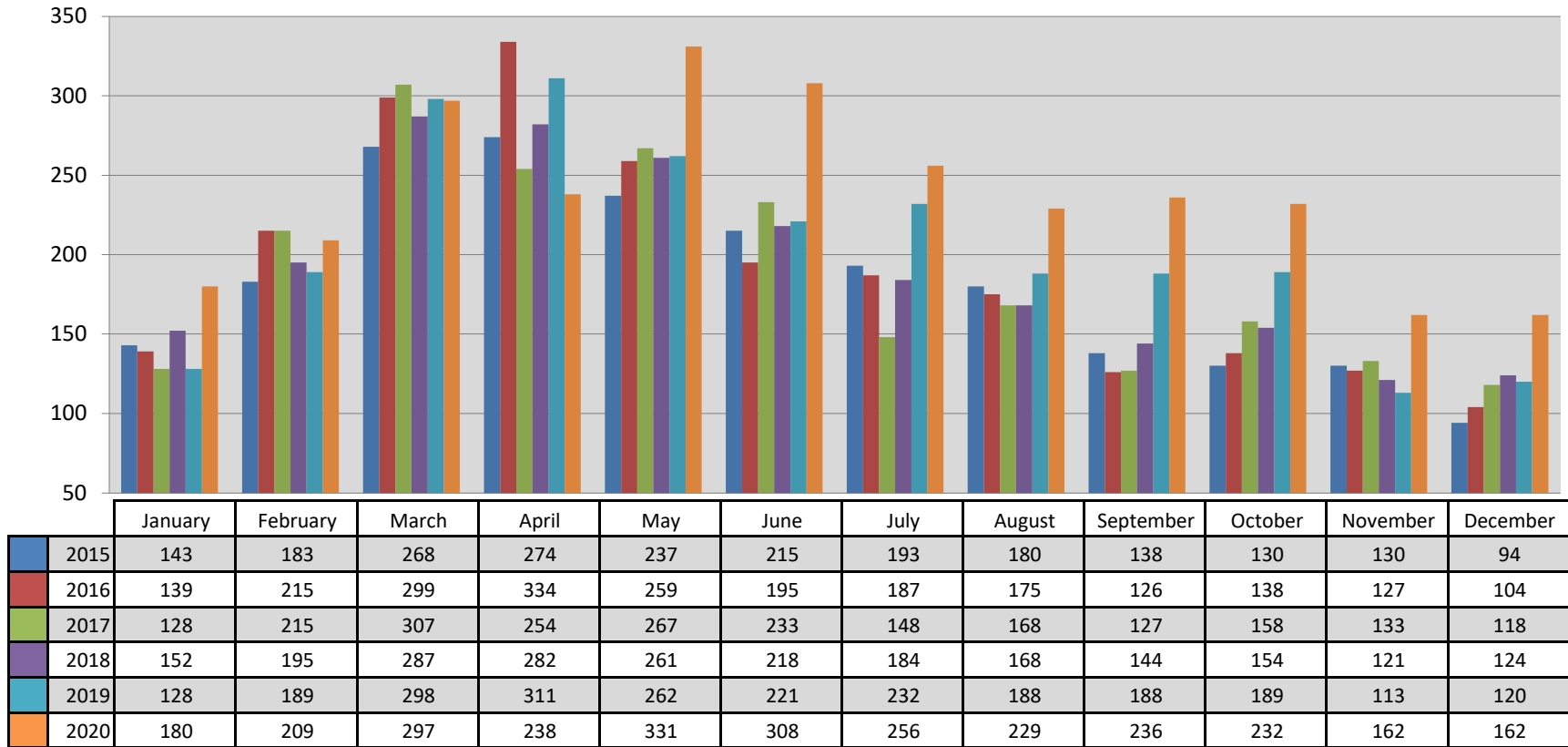
Single Family Homes Average Cumulative Days on Market Per Month in Boone County, MO



This representation is based in whole or in part on the data supplied by the Columbia Board of REALTORS® (CBOR). CBOR does not guarantee nor is in any way responsible for its accuracy. Data maintained by CBOR may not reflect all real estate activity in the market.



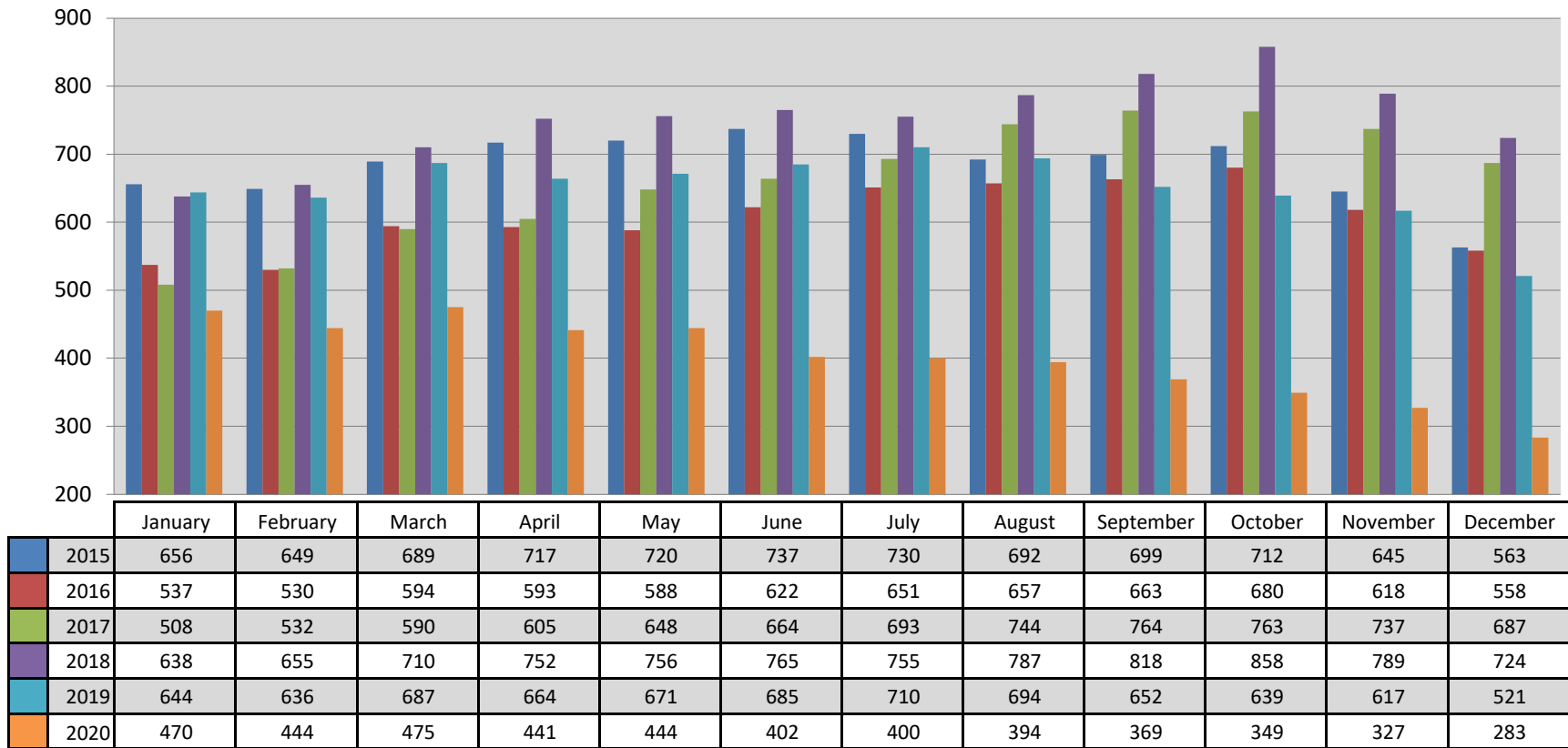
Single Family Pending Listings on Market Per Month in Boone County, MO



This representation is based in whole or in part on the data supplied by the Columbia Board of REALTORS® (CBOR). CBOR does not guarantee nor is in any way responsible for its accuracy. Data maintained by CBOR may not reflect all real estate activity in the market.



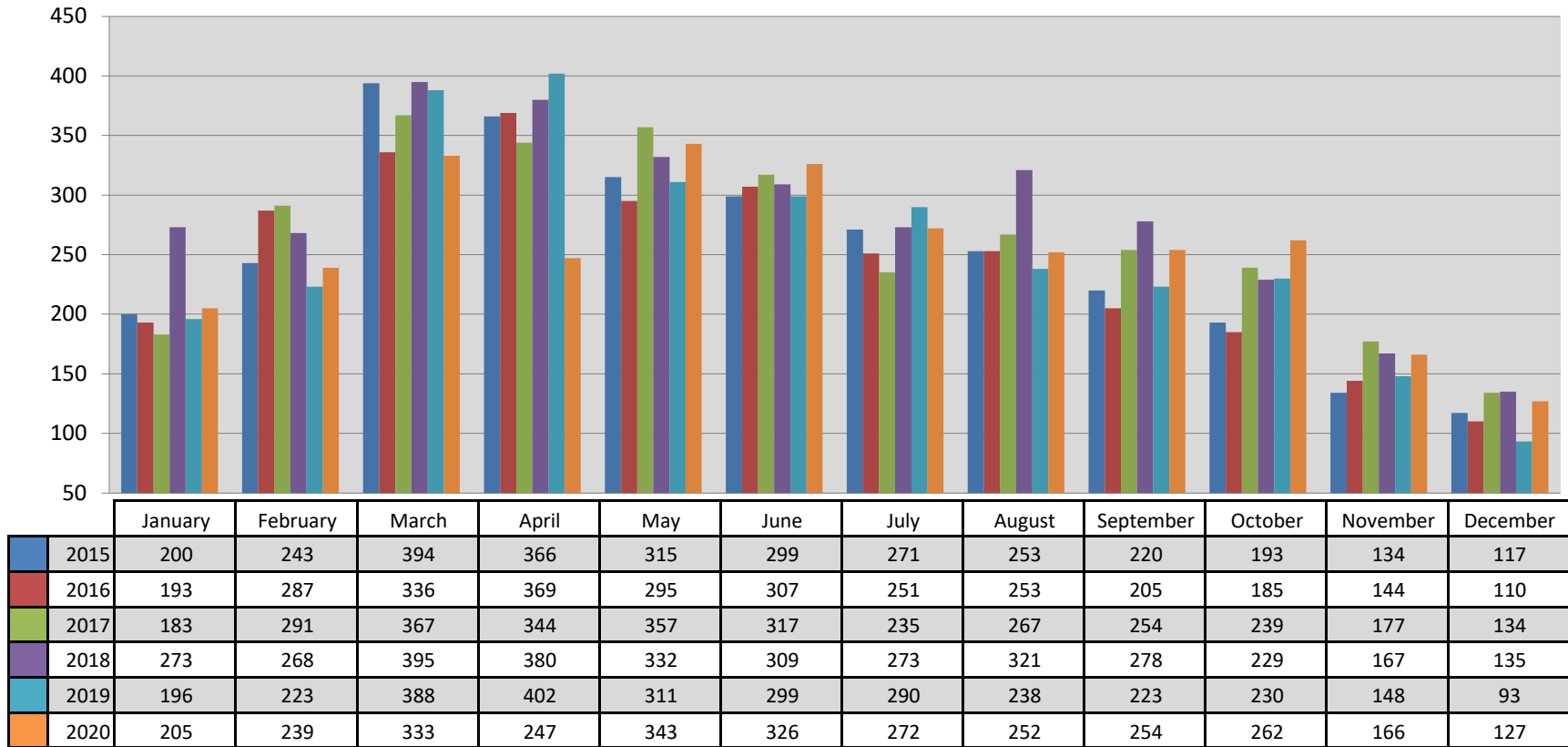
Single Family Active Listings on Market Per Month in Boone County, MO



This representation is based in whole or in part on the data supplied by the Columbia Board of REALTORS® (CBOR). CBOR does not guarantee nor is in any way responsible for its accuracy. Data maintained by CBOR may not reflect all real estate activity in the market.



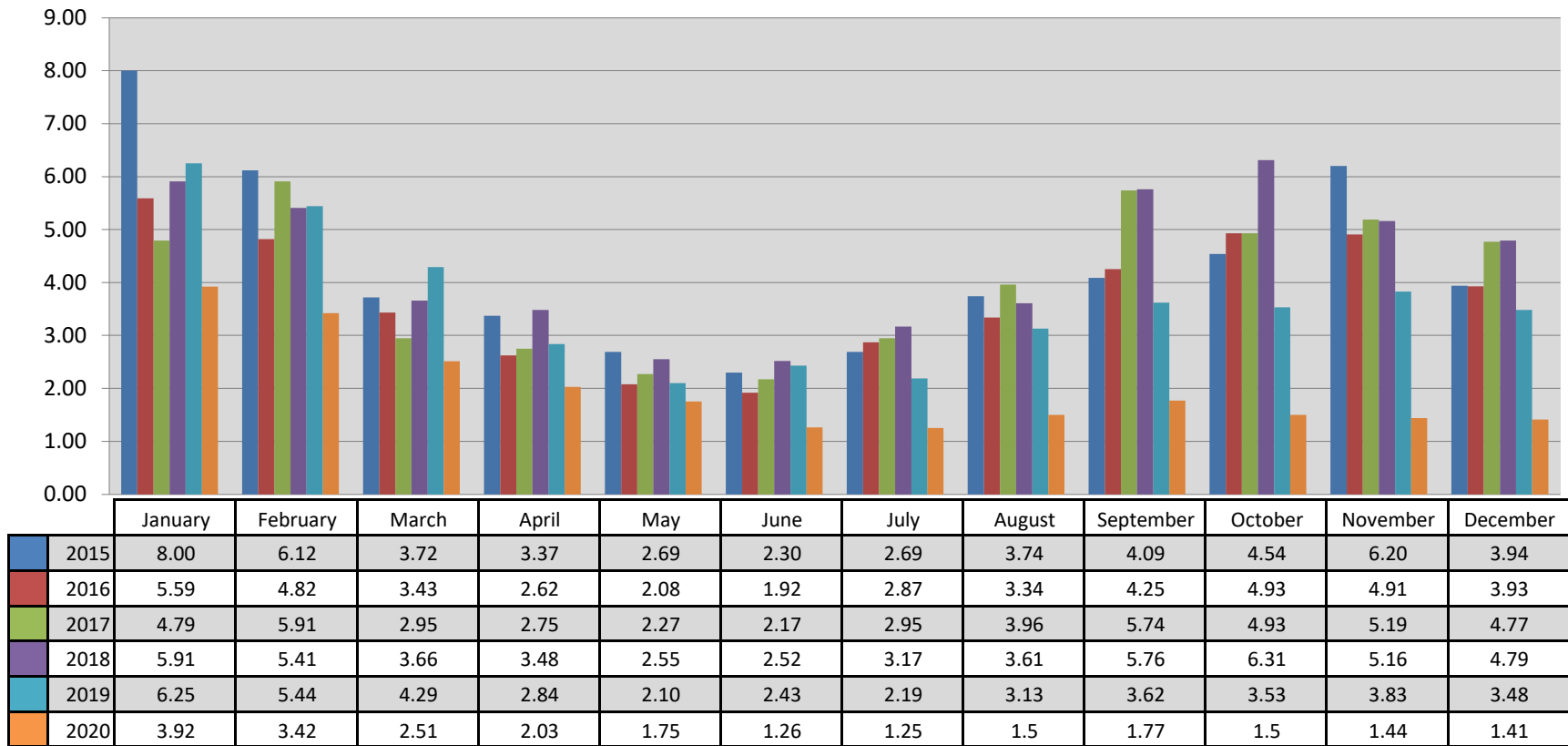
Single Family New Listings Added to Market Per Month in Boone County, MO



This representation is based in whole or in part on the data supplied by the Columbia Board of REALTORS® (CBOR). CBOR does not guarantee nor is in any way responsible for its accuracy. Data maintained by CBOR may not reflect all real estate activity in the market.



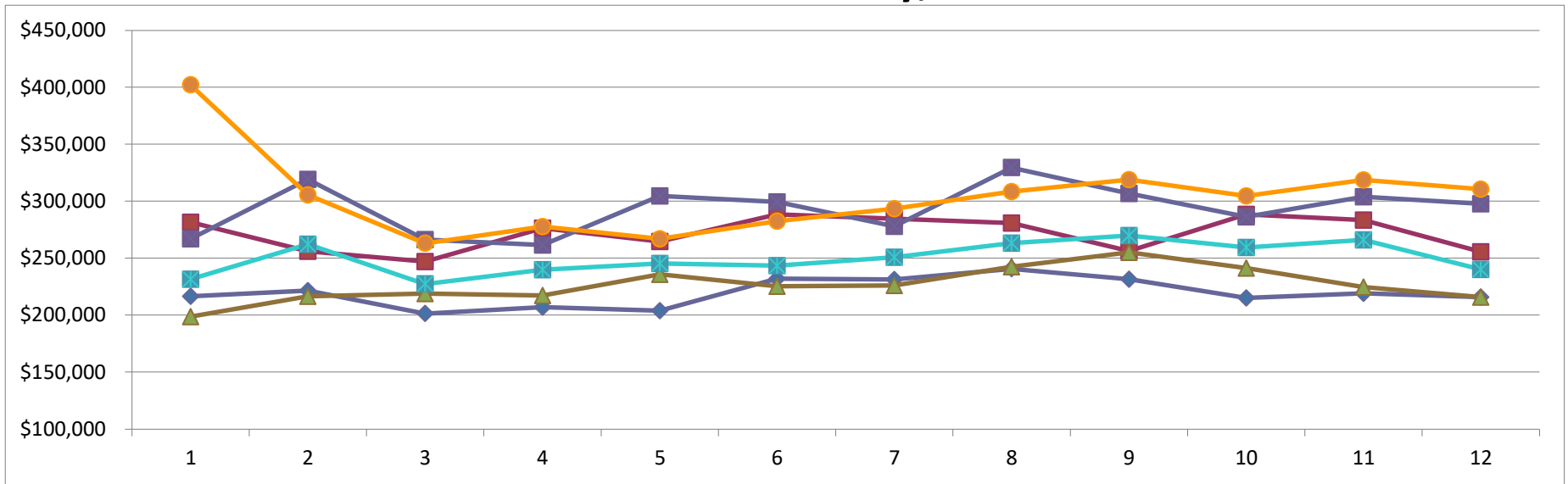
Months Supply of Inventory of Single Family Homes in Boone County, MO



This representation is based in whole or in part on the data supplied by the Columbia Board of REALTORS® (CBOR). CBOR does not guarantee nor is in any way responsible for its accuracy. Data maintained by CBOR may not reflect all real estate activity in the market.



New Construction Single Family Vs. Existing Homes Average Sold Price Per Month in Boone County, Missouri

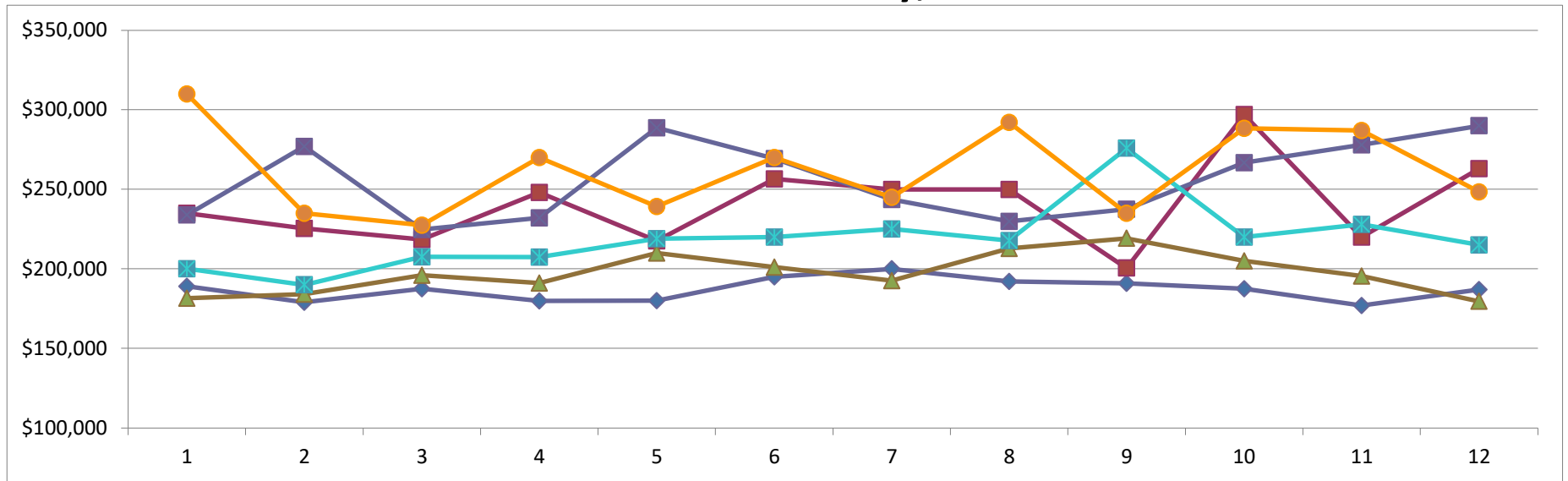


| | January | February | March | April | May | June | July | August | September | October | November | December |
|----------------|-----------|-----------|-----------|-----------|-----------|-----------|-----------|-----------|-----------|-----------|-----------|-----------|
| 2018 Existing | \$216,410 | \$221,513 | \$201,496 | \$207,082 | \$203,870 | \$231,892 | \$231,157 | \$240,760 | \$231,517 | \$215,119 | \$219,240 | \$215,688 |
| 2018 New Const | \$281,610 | \$256,031 | \$246,998 | \$276,269 | \$264,552 | \$288,486 | \$284,662 | \$280,921 | \$256,265 | \$288,398 | \$283,544 | \$255,517 |
| 2019 Existing | \$198,726 | \$216,567 | \$218,982 | \$217,152 | \$235,761 | \$225,242 | \$225,929 | \$242,572 | \$255,166 | \$241,350 | \$224,599 | \$215,752 |
| 2019 New Const | \$266,945 | \$319,236 | \$266,242 | \$261,548 | \$304,521 | \$299,322 | \$277,999 | \$329,587 | \$306,664 | \$286,223 | \$303,818 | \$297,732 |
| 2020 Existing | \$231,475 | \$262,145 | \$227,450 | \$239,924 | \$245,348 | \$243,455 | \$250,713 | \$263,244 | \$269,881 | \$259,491 | \$266,024 | \$239,986 |
| 2020 New Const | \$402,237 | \$305,485 | \$263,083 | \$277,634 | \$267,062 | \$282,477 | \$293,487 | \$308,406 | \$318,891 | \$304,502 | \$318,784 | \$310,510 |

This representation is based in whole or in part on the data supplied by the Columbia Board of REALTORS® (CBOR). CBOR does not guarantee nor is in any way responsible for its accuracy. Data maintained by CBOR may not reflect all real estate activity in the market.



New Construction Single Family Vs. Existing Homes Median Sold Price Per Month in Boone County, Missouri



| | January | February | March | April | May | June | July | August | September | October | November | December |
|----------------|-----------|-----------|-----------|-----------|-----------|-----------|-----------|-----------|-----------|-----------|-----------|-----------|
| 2018 Existing | \$189,000 | \$179,000 | \$187,500 | \$179,900 | \$180,000 | \$195,000 | \$200,000 | \$192,059 | \$190,800 | \$187,500 | \$177,000 | \$187,000 |
| 2018 New Const | \$235,000 | \$225,390 | \$218,500 | \$248,000 | \$217,500 | \$256,500 | \$249,900 | \$249,900 | \$200,500 | \$297,000 | \$219,900 | \$263,000 |
| 2019 Existing | \$181,500 | \$184,000 | \$195,900 | \$191,000 | \$210,000 | \$201,000 | \$192,500 | \$212,900 | \$219,200 | \$205,000 | \$195,500 | \$179,600 |
| 2019 New Const | \$233,900 | \$277,000 | \$224,777 | \$232,000 | \$288,745 | \$269,275 | \$243,652 | \$229,900 | \$237,500 | \$266,812 | \$277,900 | \$290,000 |
| 2020 Existing | \$200,000 | \$190,000 | \$207,500 | \$207,450 | \$219,000 | \$220,000 | \$225,000 | \$217,800 | \$275,900 | \$219,900 | \$228,000 | \$215,000 |
| 2020 New Const | \$309,900 | \$235,000 | \$227,500 | \$269,900 | \$239,250 | \$270,000 | \$245,000 | \$292,000 | \$235,000 | \$288,340 | \$287,000 | \$248,324 |

This representation is based in whole or in part on the data supplied by the Columbia Board of REALTORS® (CBOR). CBOR does not guarantee nor is in any way responsible for its accuracy. Data maintained by CBOR may not reflect all real estate activity in the market.



December 2020 Sold Single Fam. Homes by Price Range for Boone County, MO

2019

| Sold Listings | |
|-----------------------|---------------|
| List Price Range | # of Listings |
| \$0-\$99,999 | 11 |
| \$100,000-\$149,999 | 39 |
| \$150,000-\$199,999 | 29 |
| \$200,000-\$249,999 | 23 |
| \$250,000-\$299,999 | 22 |
| \$300,000-\$349,999 | 7 |
| \$350,000-\$399,999 | 7 |
| \$400,000-\$449,999 | 7 |
| \$450,000-\$499,999 | 3 |
| \$500,000-\$749,999 | 7 |
| \$750,000 - \$999,999 | 0 |
| 1000000+ | 0 |
| Total | 155 |

2020

| Sold Listings | |
|-----------------------|---------------|
| List Price Range | # of Listings |
| \$0-\$99,999 | 11 |
| \$100,000-\$149,999 | 25 |
| \$150,000-\$199,999 | 53 |
| \$200,000-\$249,999 | 35 |
| \$250,000-\$299,999 | 28 |
| \$300,000-\$349,999 | 13 |
| \$350,000-\$399,999 | 16 |
| \$400,000-\$449,999 | 9 |
| \$450,000-\$499,999 | 6 |
| \$500,000-\$749,999 | 10 |
| \$750,000 - \$999,999 | 0 |
| 1000000+ | 0 |
| Total | 206 |

This representation is based in whole or in part on the data supplied by the Columbia Board of REALTORS® (CBOR). CBOR does not guarantee nor is in any way responsible for its accuracy. Data maintained by CBOR may not reflect all real estate activity in the market.



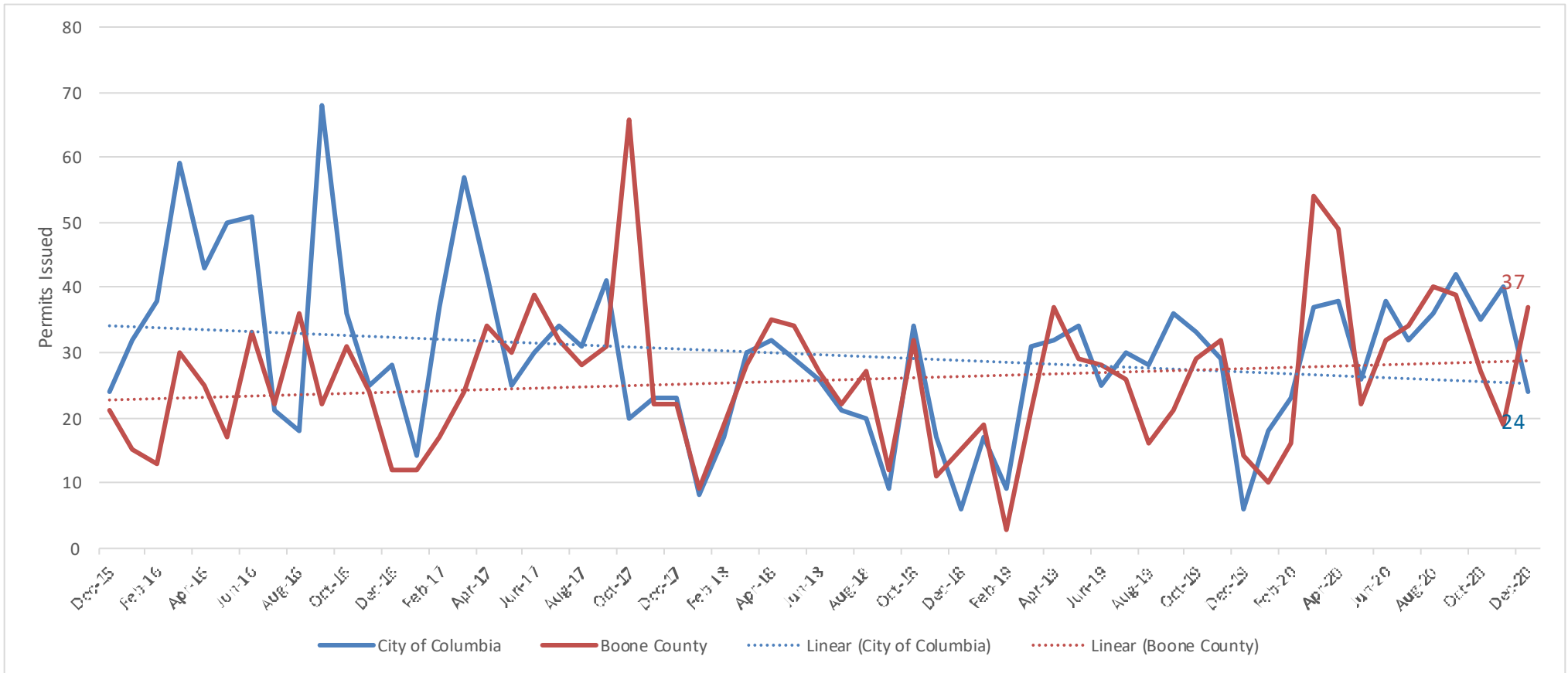
Dec. 2020 Single Family Residence Months Supply of Inventory by Price Range for Boone County, MO

| Sold Listings | |
|---------------------|--------------------|
| List Price Range | # of Months Supply |
| \$100,000-\$149,999 | 1.55 |
| \$150,000-\$199,999 | 1.02 |
| \$200,000-\$249,999 | 0.81 |
| \$250,000-\$299,999 | 1.17 |
| \$300,000-\$349,999 | 0.88 |
| \$350,000-\$399,999 | 1.13 |
| \$400,000-\$449,999 | 1.88 |
| \$450,000-\$499,999 | 4.75 |
| \$500,000-\$749,999 | 3.00 |

This representation is based in whole or in part on the data supplied by the Columbia Board of REALTORS® (CBOR). CBOR does not guarantee nor is in any way responsible for its accuracy. Data maintained by CBOR may not reflect all real estate activity in the market.



New Residential Single Family Detached Building Permits Issued By City of Columbia & Boone County, MO



This representation is based in whole or in part on the data supplied by the Columbia Board of REALTORS® (CBOR). CBOR does not guarantee nor is in any way responsible for its accuracy. Data maintained by CBOR may not reflect all real estate activity in the market.



2020 Single Family Sold Listings for MLS Area Municipalities

| 2019 | | 2020 | | |
|---------------|---------------|---------------|---------------|----------|
| Sold Listings | | Sold Listings | | |
| City | # of Listings | City | # of Listings | % Change |
| Ashland | 123 | Ashland | 123 | 0% |
| Boonville* | 84 | Boonville* | 111 | 32% |
| Centralia | 96 | Centralia | 125 | 30% |
| Columbia | 1,658 | Columbia | 1,819 | 10% |
| Fulton* | 129 | Fulton* | 135 | 5% |
| Hallsville | 60 | Hallsville | 77 | 28% |
| Mexico* | 105 | Mexico* | 160 | 52% |
| Moberly* | 93 | Moberly* | 117 | 26% |

*Statistical data only includes listings entered into the CBOR MLS

This representation is based in whole or in part on the data supplied by the Columbia Board of REALTORS® (CBOR). CBOR does not guarantee nor is in any way responsible for its accuracy. Data maintained by CBOR may not reflect all real estate activity in the market.



2020 Average Sold Price Single Family Sold Listings for MLS Area Municipalities

2019

| Sold Listings | |
|---------------|-----------|
| City | Avg Price |
| Ashland | \$242,835 |
| Boonville* | \$143,688 |
| Centralia | \$157,680 |
| Columbia | \$241,574 |
| Fulton* | \$161,867 |
| Hallsville | \$222,107 |
| Mexico* | \$126,615 |
| Moberly* | \$122,344 |

2020

| Sold Listings | | % Change |
|---------------|-----------|----------|
| City | Avg Price | |
| Ashland | \$254,400 | 5% |
| Boonville* | \$170,138 | 18% |
| Centralia | \$176,458 | 12% |
| Columbia | \$262,447 | 9% |
| Fulton* | \$164,066 | 1% |
| Hallsville | \$269,087 | 21% |
| Mexico* | \$126,809 | 0% |
| Moberly* | \$115,327 | -6% |

*Statistical data only includes listings entered into the CBOR MLS



Average Single Family Months of Inventory for MLS Area Municipalities

2019

2020

| Sold Listings | | Sold Listings | | % Change |
|---------------|-----------|---------------|-----------|----------|
| City | Avg Price | City | Avg Price | |
| Ashland | 4.71 | Ashland | 2.45 | -48% |
| Boonville* | 4.62 | Boonville* | 2.41 | -48% |
| Centralia | 8.65 | Centralia | 3.23 | -63% |
| Columbia | 3.43 | Columbia | 1.91 | -44% |
| Fulton* | 4.98 | Fulton* | 4.18 | -16% |
| Hallsville | 4.38 | Hallsville | 3.34 | -24% |
| Mexico* | 5.81 | Mexico* | 3.20 | -45% |
| Moberly* | 4.46 | Moberly* | 2.51 | -44% |

*Statistical data only includes listings entered into the CBOR MLS

This representation is based in whole or in part on the data supplied by the Columbia Board of REALTORS® (CBOR). CBOR does not guarantee nor is in any way responsible for its accuracy. Data maintained by CBOR may not reflect all real estate activity in the market.