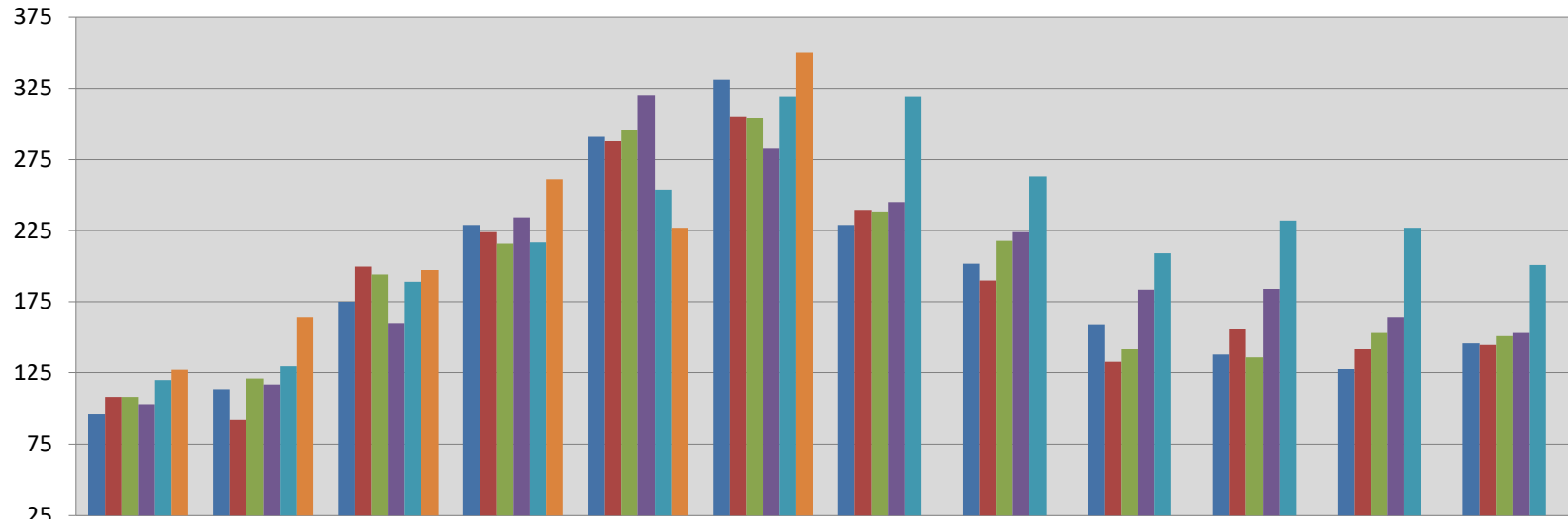




## Single Family Homes Sales Per Month in Boone County, Missouri

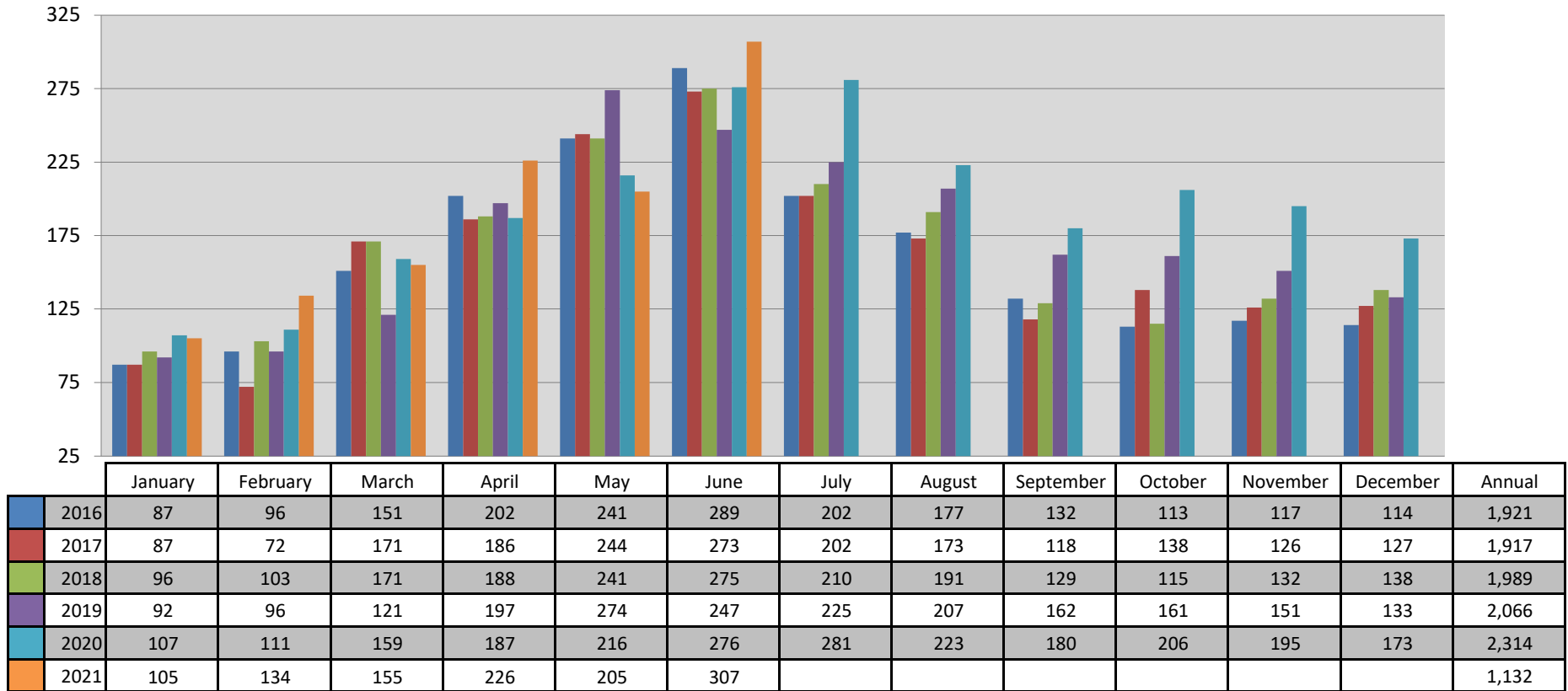


	January	February	March	April	May	June	July	August	September	October	November	December	Annual
2016	96	113	175	229	291	331	229	202	159	138	128	146	2,237
2017	108	92	200	224	288	305	239	190	133	156	142	145	2,222
2018	108	121	194	216	296	304	238	218	142	136	153	151	2,277
2019	103	117	160	234	320	283	245	224	183	184	164	153	2,370
2020	120	130	189	217	254	319	319	263	209	232	227	201	2,680
2021	127	164	197	261	227	350							1,326

This representation is based in whole or in part on the data supplied by the Columbia Board of REALTORS® (CBOR). CBOR does not guarantee nor is in any way responsible for its accuracy. Data maintained by CBOR may not reflect all real estate activity in the market.



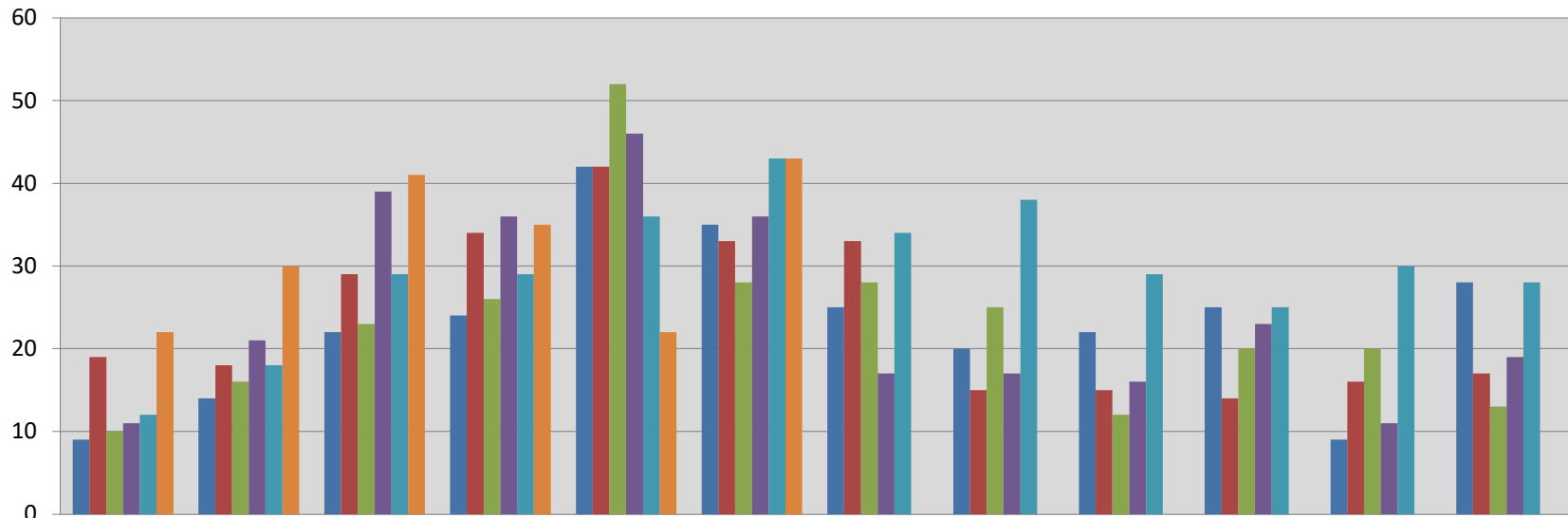
## Existing Single Family Homes Sales Per Month in Boone County, Missouri



This representation is based in whole or in part on the data supplied by the Columbia Board of REALTORS® (CBOR). CBOR does not guarantee nor is in any way responsible for its accuracy. Data maintained by CBOR may not reflect all real estate activity in the market.



## New Construction Single Family Homes Sales Per Month in Boone County, MO

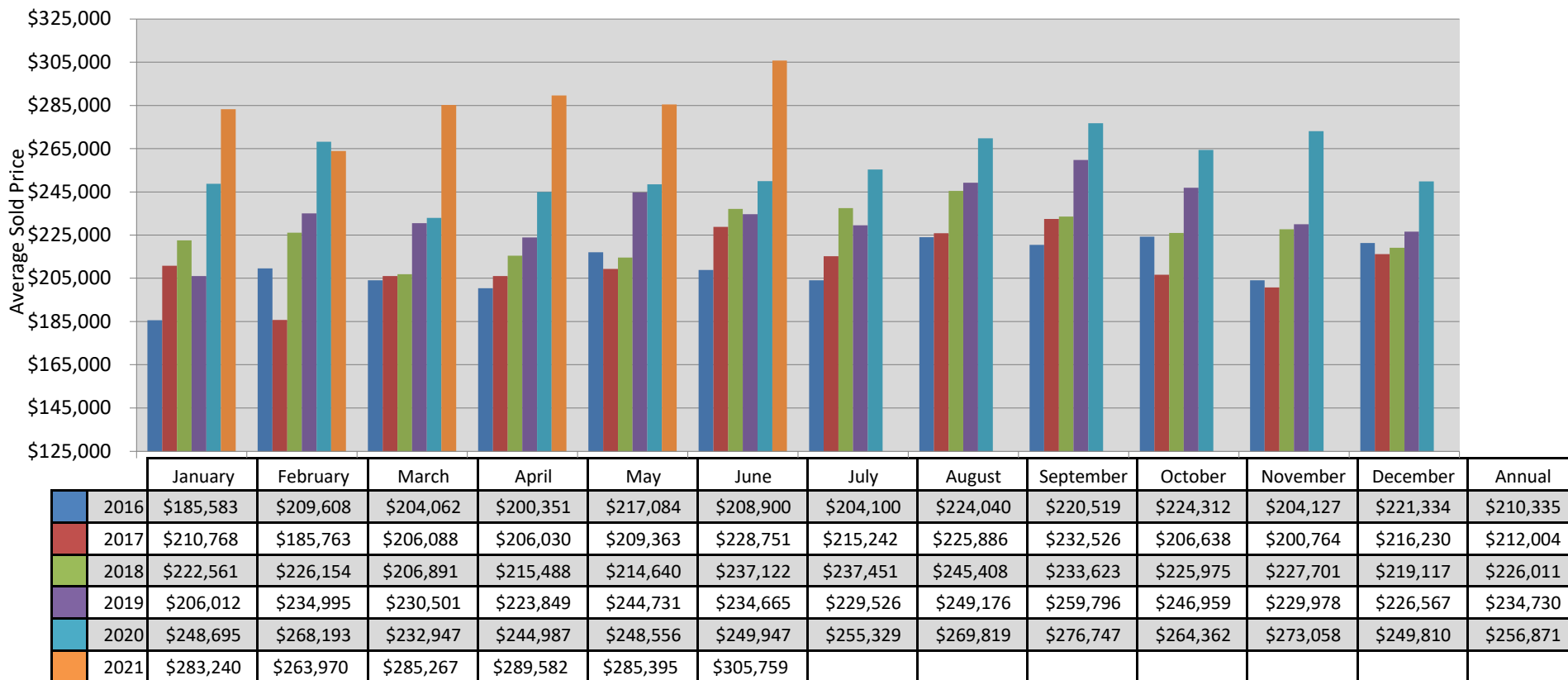


	January	February	March	April	May	June	July	August	September	October	November	December	Annual
2016	9	14	22	24	42	35	25	20	22	25	9	28	275
2017	19	18	29	34	42	33	33	15	15	14	16	17	285
2018	10	16	23	26	52	28	28	25	12	20	20	13	273
2019	11	21	39	36	46	36	17	17	16	23	11	19	292
2020	12	18	29	29	36	43	34	38	29	25	30	28	351
2021	22	30	41	35	22	43							193

This representation is based in whole or in part on the data supplied by the Columbia Board of REALTORS® (CBOR). CBOR does not guarantee nor is in any way responsible for its accuracy. Data maintained by CBOR may not reflect all real estate activity in the market.



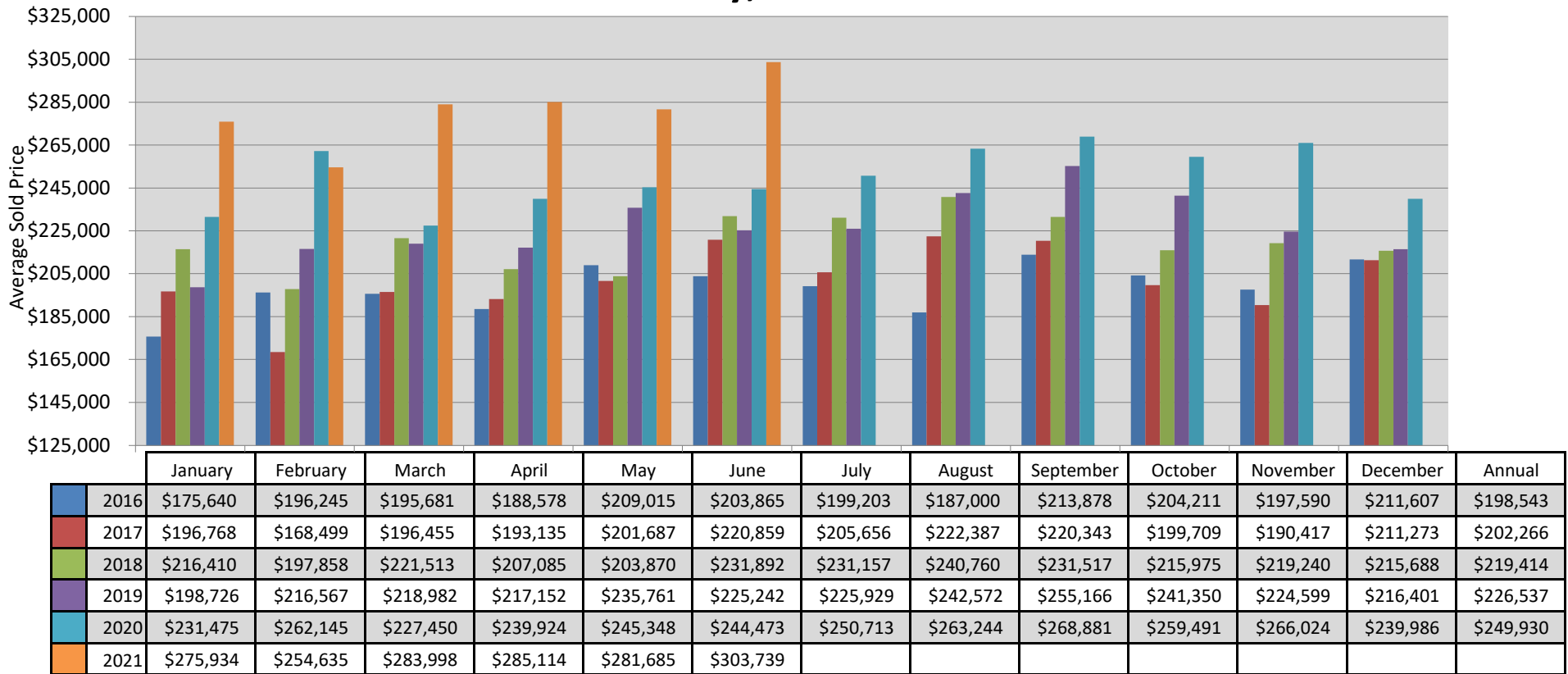
## Single Family Homes Average Sold Price Per Month in Boone County, Missouri



This representation is based in whole or in part on the data supplied by the Columbia Board of REALTORS® (CBOR). CBOR does not guarantee nor is in any way responsible for its accuracy. Data maintained by CBOR may not reflect all real estate activity in the market.



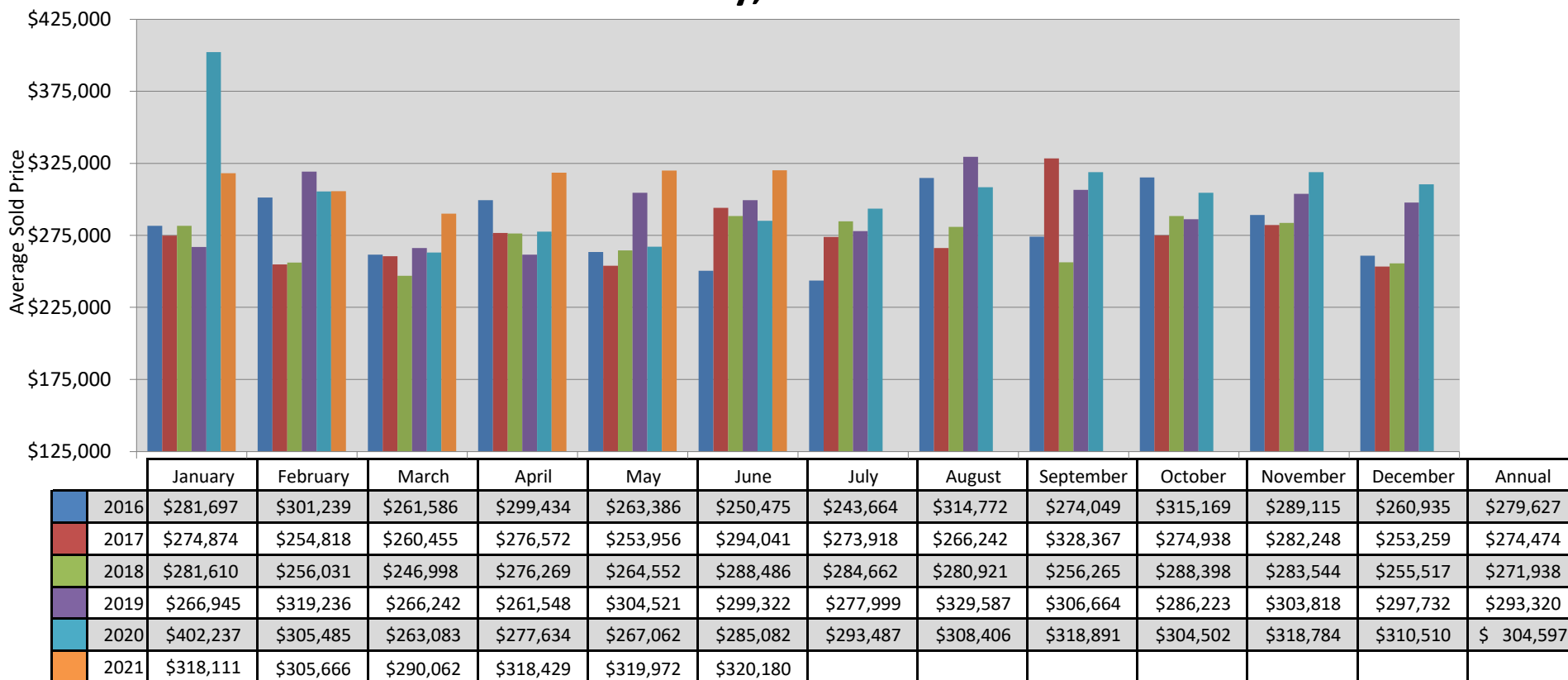
## Existing Single Family Homes Average Sold Price Per Month in Boone County, Missouri



This representation is based in whole or in part on the data supplied by the Columbia Board of REALTORS® (CBOR). CBOR does not guarantee nor is in any way responsible for its accuracy. Data maintained by CBOR may not reflect all real estate activity in the market.



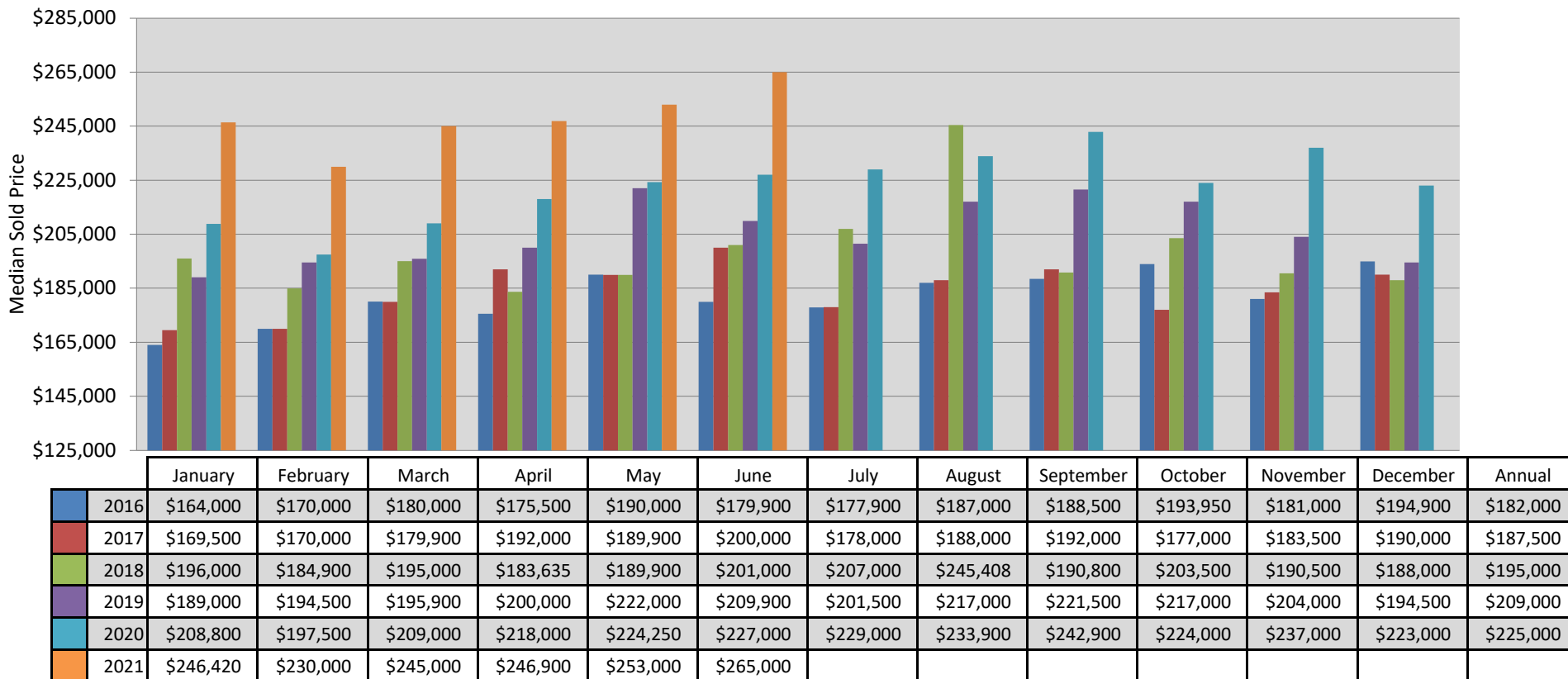
## New Construction Single Family Homes Average Sold Price Per Month in Boone County, Missouri



This representation is based in whole or in part on the data supplied by the Columbia Board of REALTORS® (CBOR). CBOR does not guarantee nor is in any way responsible for its accuracy. Data maintained by CBOR may not reflect all real estate activity in the market.



## Single Family Homes Median Sold Price Per Month in Boone County, Missouri



This representation is based in whole or in part on the data supplied by the Columbia Board of REALTORS® (CBOR). CBOR does not guarantee nor is in any way responsible for its accuracy. Data maintained by CBOR may not reflect all real estate activity in the market.



## Existing Single Family Homes Median Sold Price Per Month in Boone County, Missouri

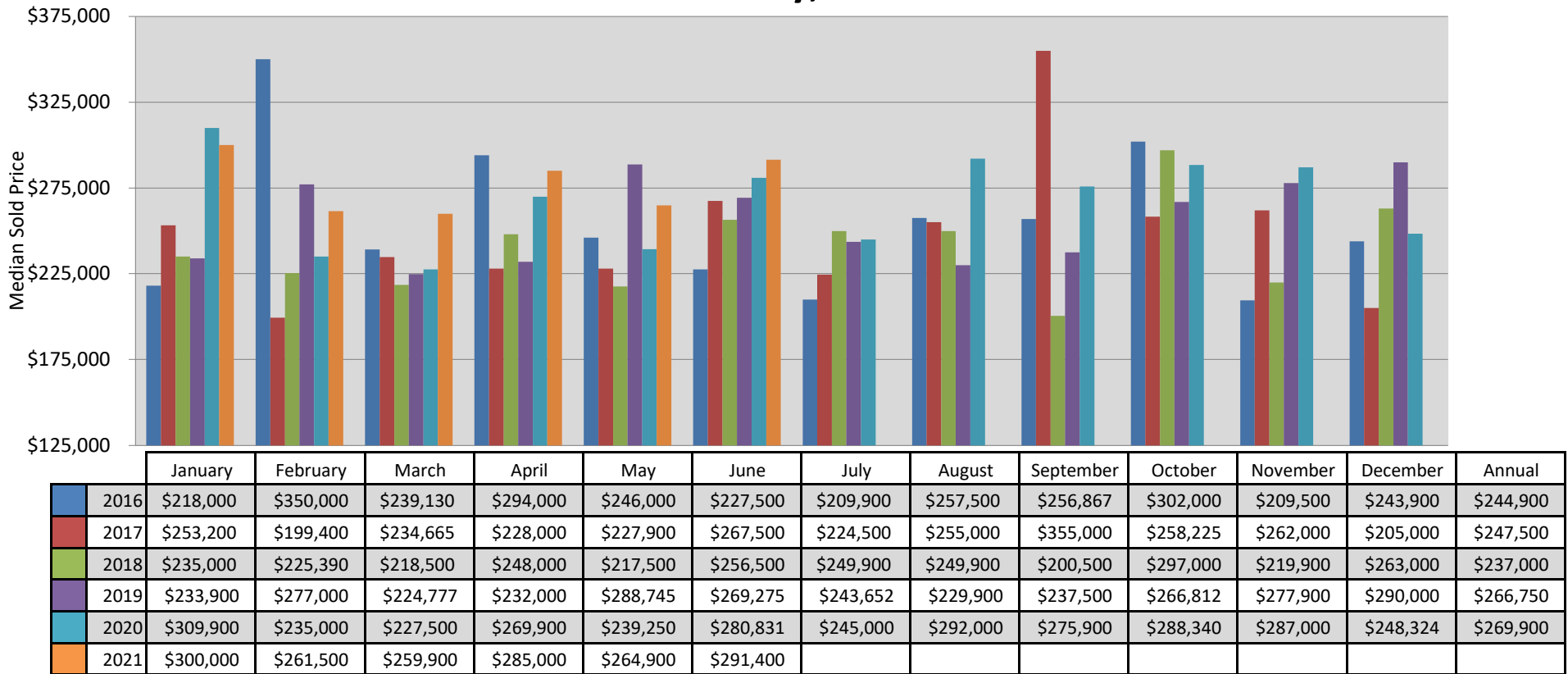


This representation is based in whole or in part on the data supplied by the Columbia Board of REALTORS® (CBOR). CBOR does not guarantee nor is in any way responsible for its accuracy. Data maintained by CBOR may not reflect all real estate activity in the market.





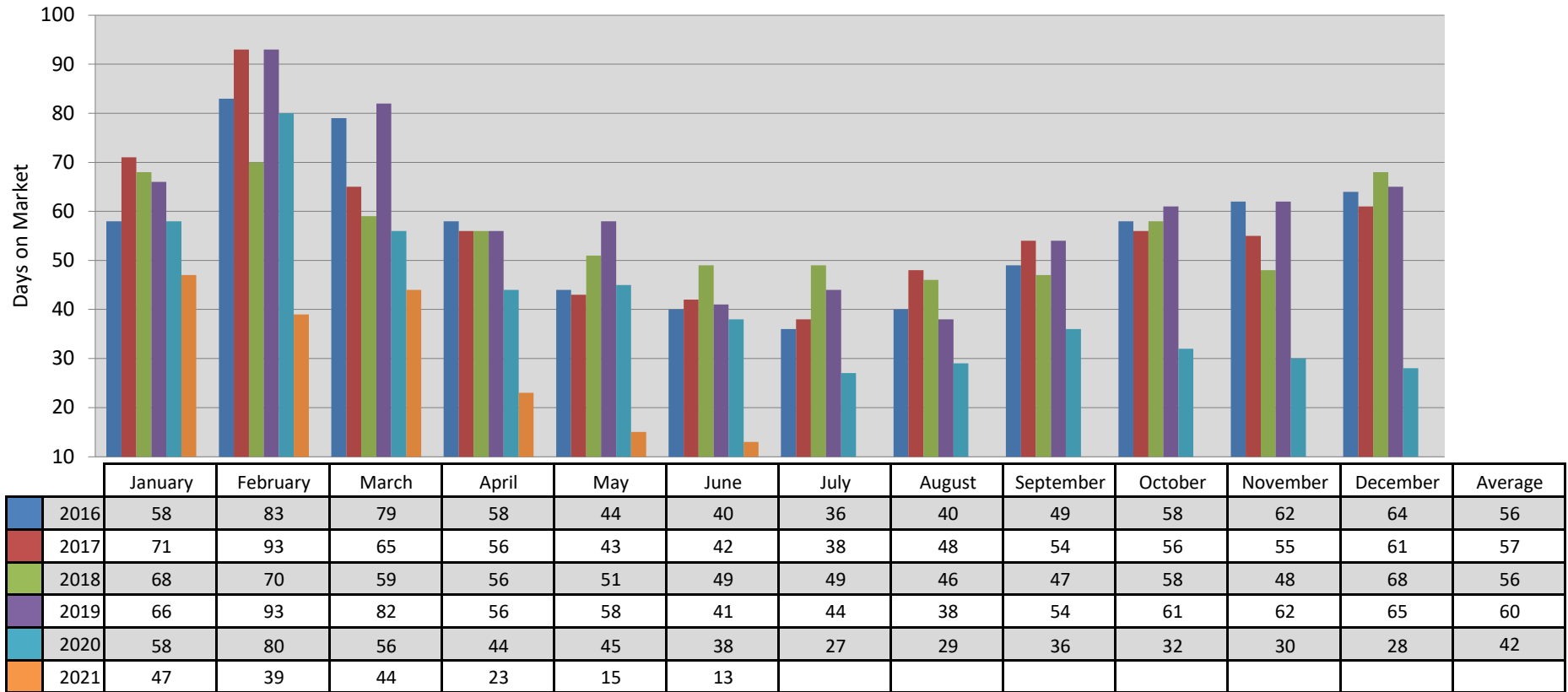
## New Construction Single Family Homes Median Sold Price Per Month in Boone County, Missouri



This representation is based in whole or in part on the data supplied by the Columbia Board of REALTORS® (CBOR). CBOR does not guarantee nor is in any way responsible for its accuracy. Data maintained by CBOR may not reflect all real estate activity in the market.



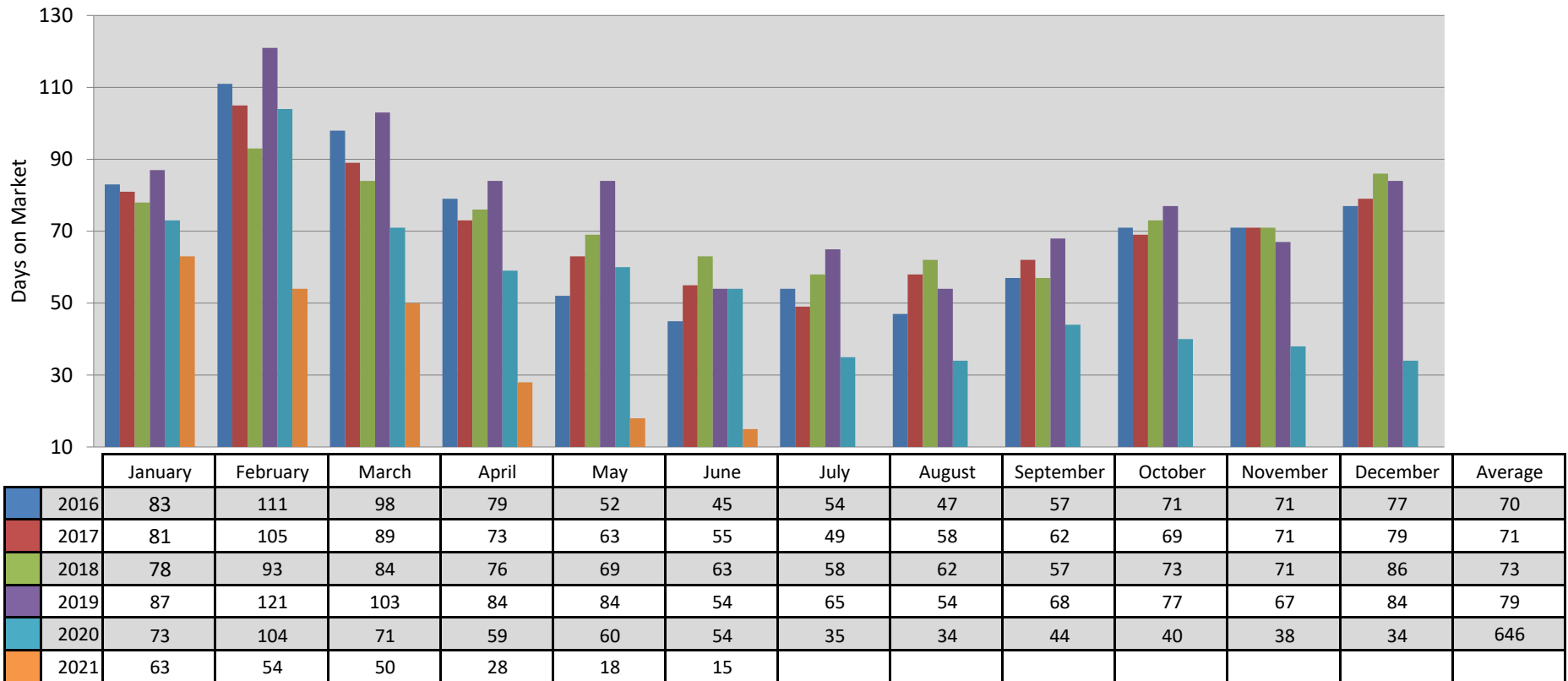
## Single Family Homes Average Days on Market Per Month in Boone County, MO



This representation is based in whole or in part on the data supplied by the Columbia Board of REALTORS® (CBOR). CBOR does not guarantee nor is in any way responsible for its accuracy. Data maintained by CBOR may not reflect all real estate activity in the market.



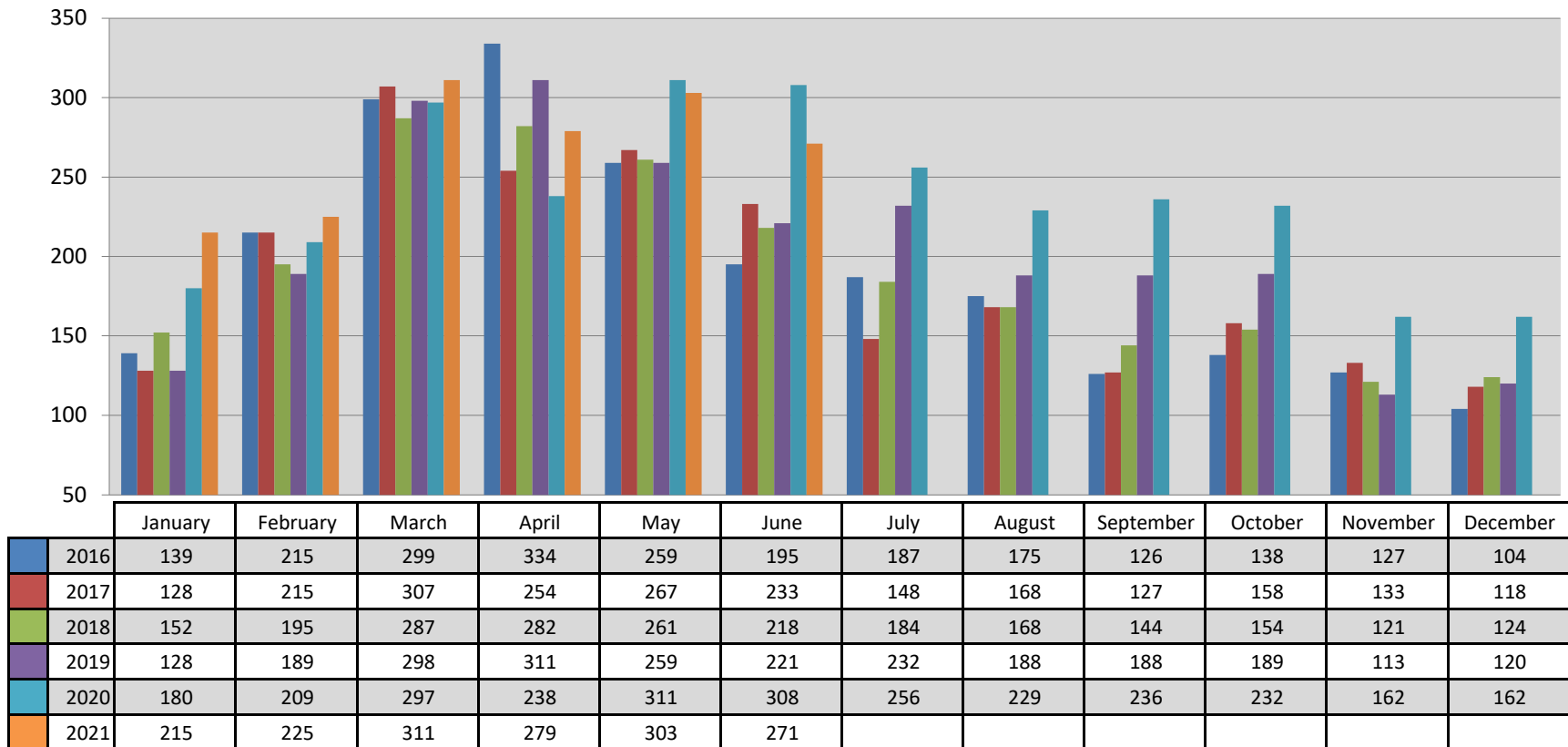
## Single Family Homes Average Cumulative Days on Market Per Month in Boone County, MO



This representation is based in whole or in part on the data supplied by the Columbia Board of REALTORS® (CBOR). CBOR does not guarantee nor is in any way responsible for its accuracy. Data maintained by CBOR may not reflect all real estate activity in the market.



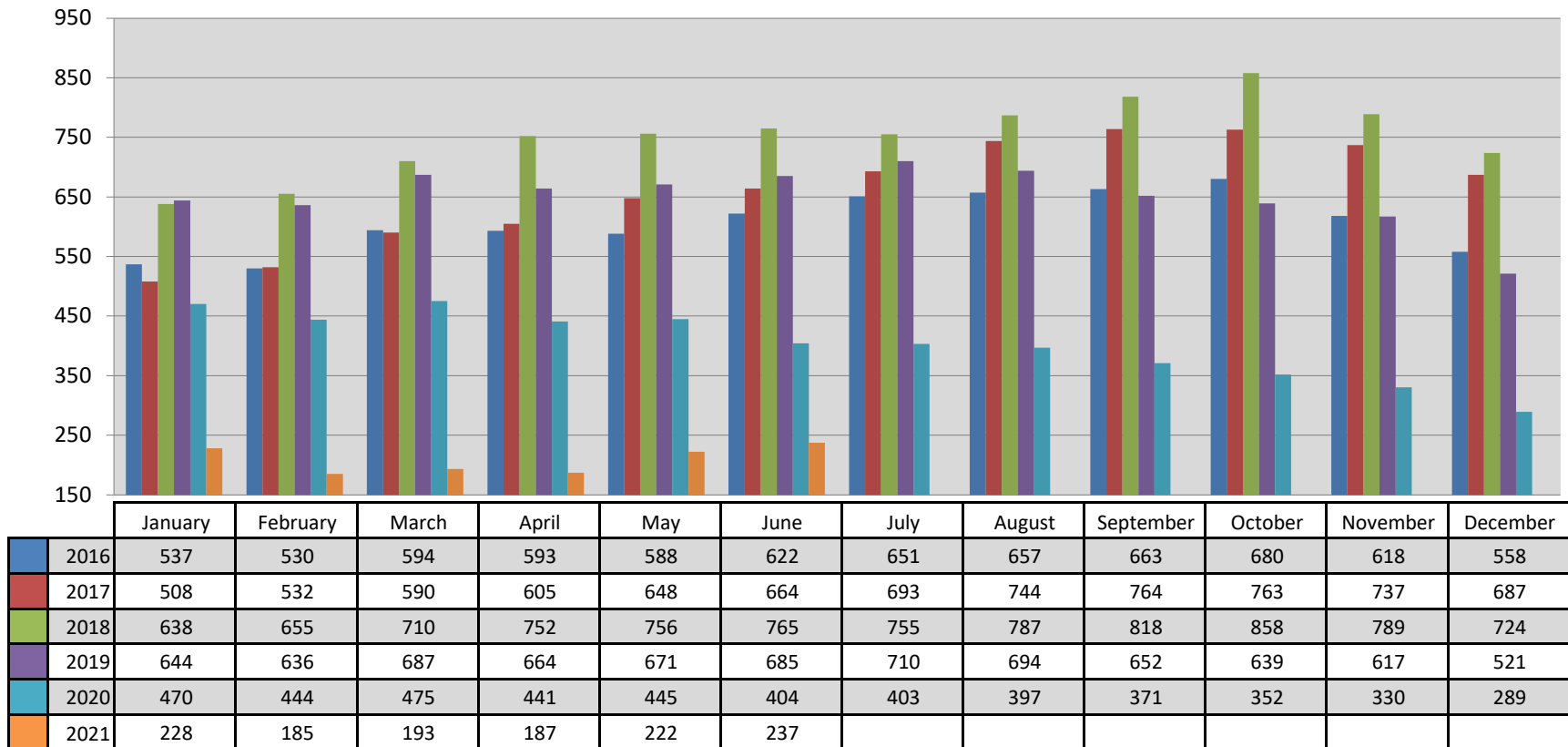
## Single Family Pending Listings on Market Per Month in Boone County, MO



This representation is based in whole or in part on the data supplied by the Columbia Board of REALTORS® (CBOR). CBOR does not guarantee nor is in any way responsible for its accuracy. Data maintained by CBOR may not reflect all real estate activity in the market.



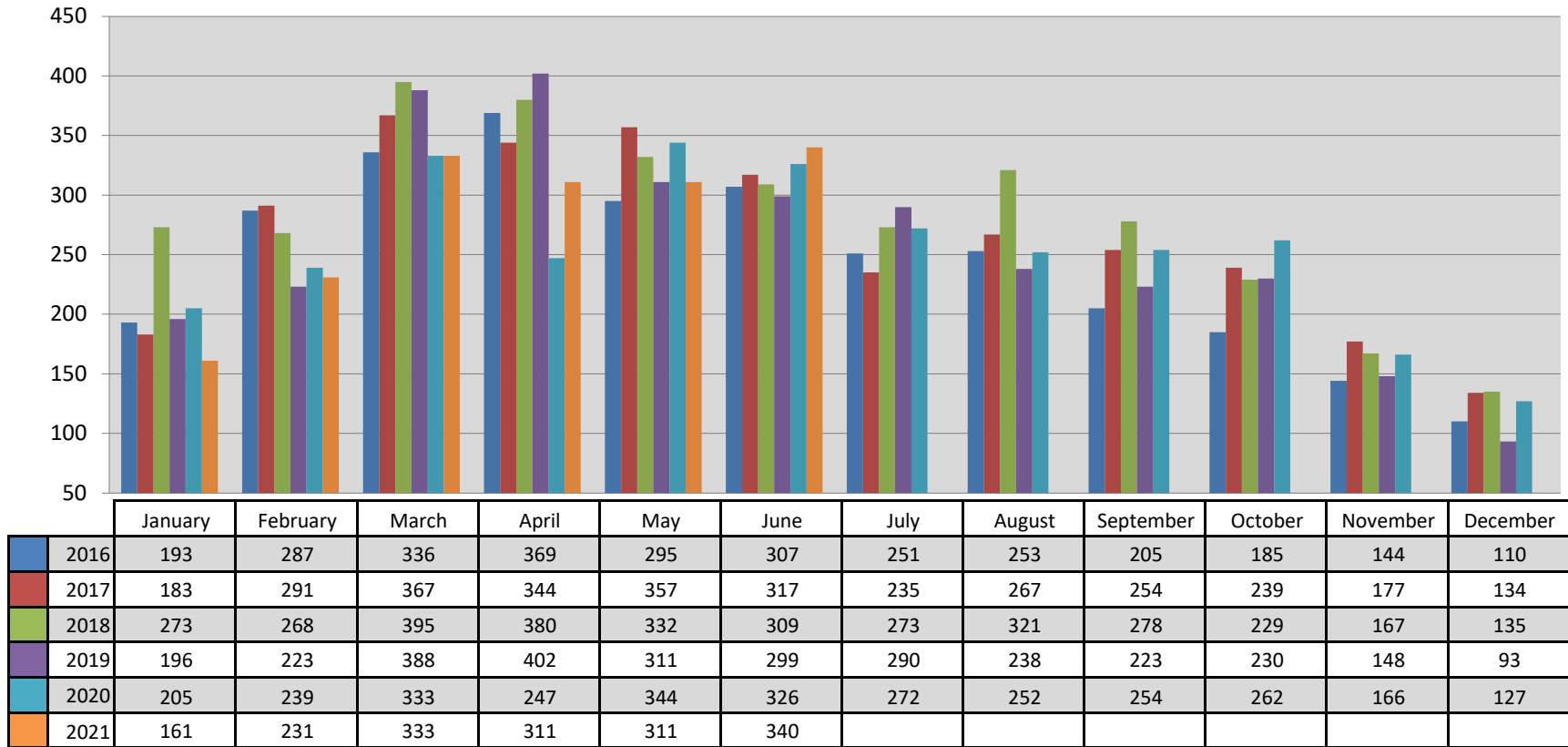
## Single Family Active Listings on Market Per Month in Boone County, MO



This representation is based in whole or in part on the data supplied by the Columbia Board of REALTORS® (CBOR). CBOR does not guarantee nor is in any way responsible for its accuracy. Data maintained by CBOR may not reflect all real estate activity in the market.



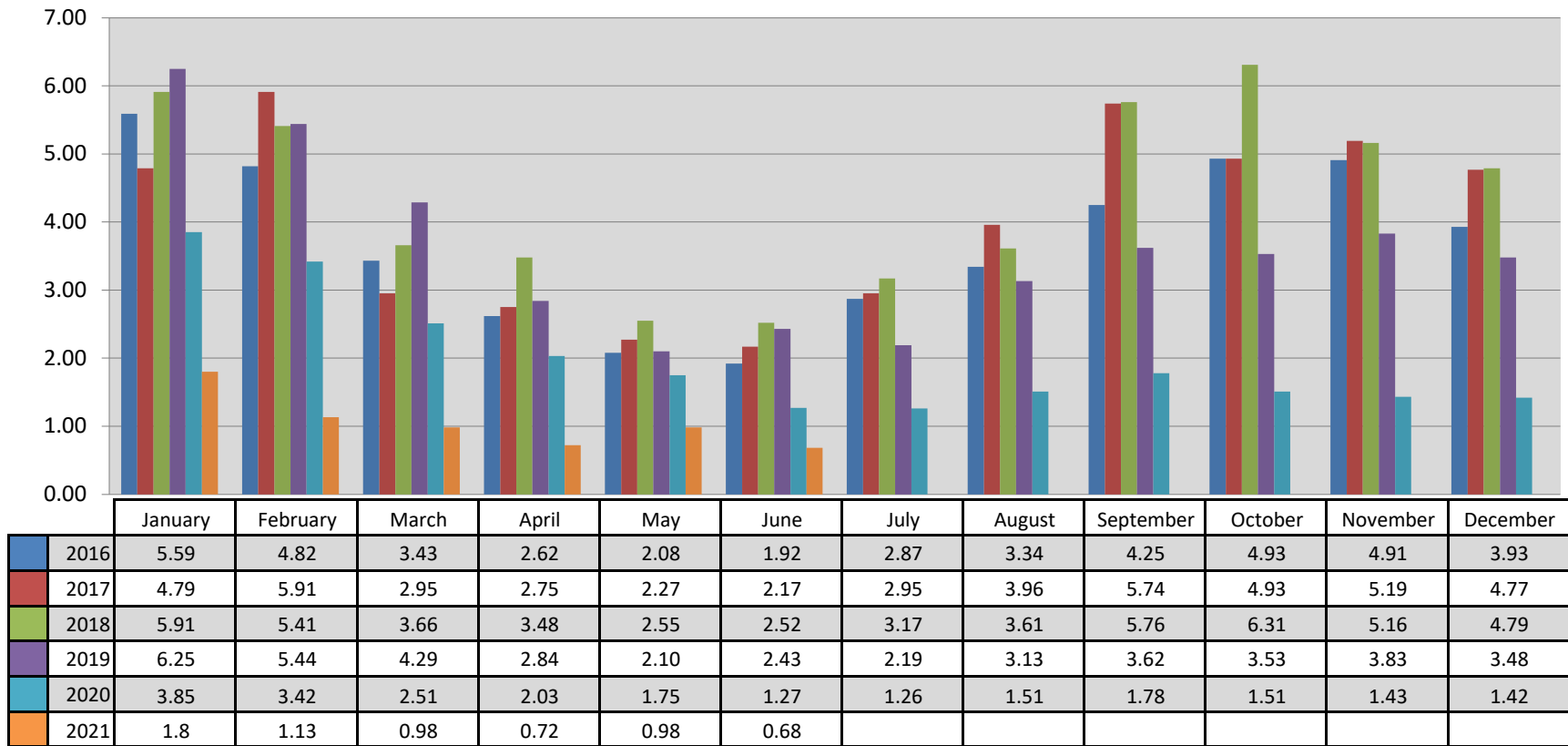
## Single Family New Listings Added to Market Per Month in Boone County, MO



This representation is based in whole or in part on the data supplied by the Columbia Board of REALTORS® (CBOR). CBOR does not guarantee nor is in any way responsible for its accuracy. Data maintained by CBOR may not reflect all real estate activity in the market.



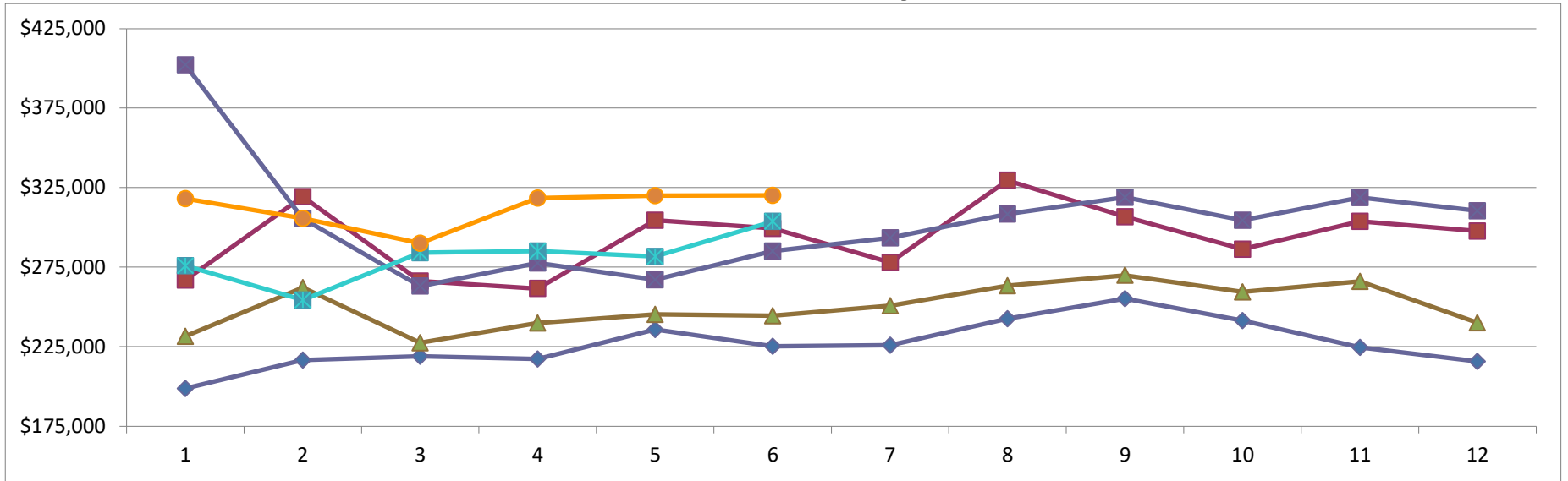
## Months Supply of Inventory of Single Family Homes in Boone County, MO



This representation is based in whole or in part on the data supplied by the Columbia Board of REALTORS® (CBOR). CBOR does not guarantee nor is in any way responsible for its accuracy. Data maintained by CBOR may not reflect all real estate activity in the market.



## New Construction Single Family Vs. Existing Homes Average Sold Price Per Month in Boone County, Missouri



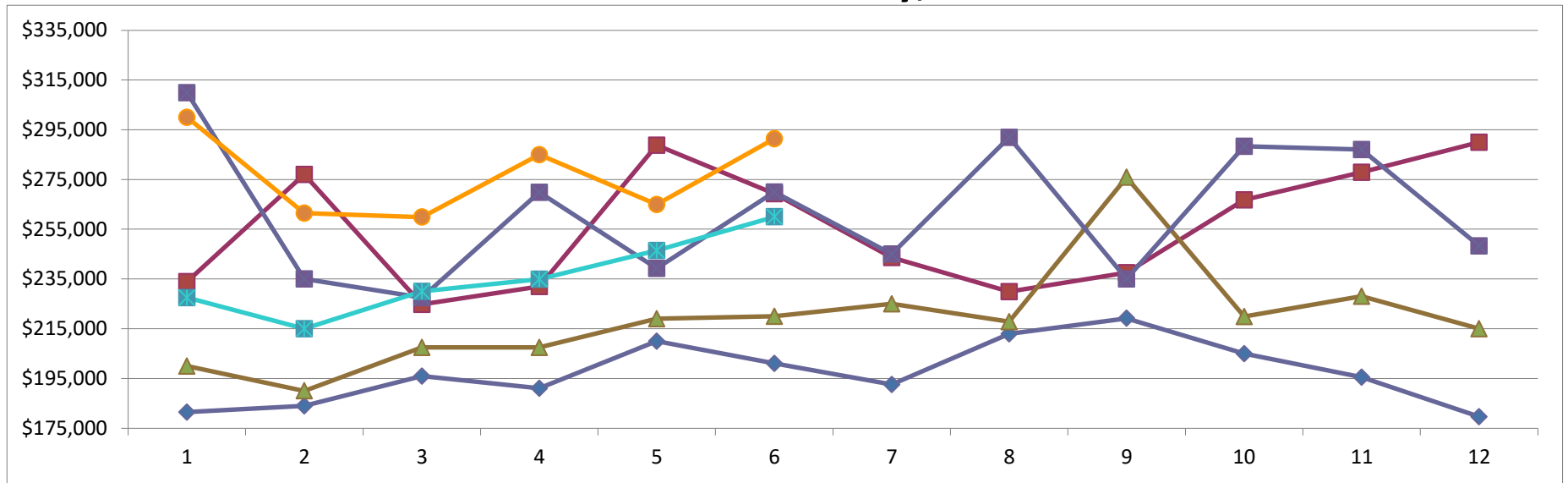
	January	February	March	April	May	June	July	August	September	October	November	December
2019 Existing	\$198,726	\$216,567	\$218,982	\$217,152	\$235,761	\$225,242	\$225,929	\$242,572	\$255,166	\$241,350	\$224,599	\$215,752
2019 New Const	\$266,945	\$319,236	\$266,242	\$261,548	\$304,521	\$299,322	\$277,999	\$329,587	\$306,664	\$286,223	\$303,818	\$297,732
2020 Existing	\$231,475	\$262,145	\$227,450	\$239,924	\$245,348	\$244,473	\$250,713	\$263,244	\$269,881	\$259,491	\$266,024	\$239,986
2020 New Const	\$402,237	\$305,485	\$263,083	\$277,634	\$267,062	\$285,082	\$293,487	\$308,406	\$318,891	\$304,502	\$318,784	\$310,510
2021 Existing	\$275,934	\$254,365	\$283,998	\$285,114	\$281,685	\$303,739						
2021 New Const	\$318,111	\$305,666	\$290,062	\$318,429	\$319,972	\$320,180						

This representation is based in whole or in part on the data supplied by the Columbia Board of REALTORS® (CBOR). CBOR does not guarantee nor is in any way responsible for its accuracy. Data maintained by CBOR may not reflect all real estate activity in the market.





## New Construction Single Family Vs. Existing Homes Median Sold Price Per Month in Boone County, Missouri



	January	February	March	April	May	June	July	August	September	October	November	December
2019 Existing	\$181,500	\$184,000	\$195,900	\$191,000	\$210,000	\$201,000	\$192,500	\$212,900	\$219,200	\$205,000	\$195,500	\$179,600
2019 New Const	\$233,900	\$277,000	\$224,777	\$232,000	\$288,745	\$269,275	\$243,652	\$229,900	\$237,500	\$266,812	\$277,900	\$290,000
2020 Existing	\$200,000	\$190,000	\$207,500	\$207,450	\$219,000	\$220,000	\$225,000	\$217,800	\$275,900	\$219,900	\$228,000	\$215,000
2020 New Const	\$309,900	\$235,000	\$227,500	\$269,900	\$239,250	\$270,000	\$245,000	\$292,000	\$235,000	\$288,340	\$287,000	\$248,324
2021 Existing	\$227,500	\$215,000	\$230,000	\$234,900	\$246,417	\$260,000						
2021 New Const	\$300,000	\$261,500	\$259,900	\$285,000	\$264,900	\$291,400						

This representation is based in whole or in part on the data supplied by the Columbia Board of REALTORS® (CBOR). CBOR does not guarantee nor is in any way responsible for its accuracy. Data maintained by CBOR may not reflect all real estate activity in the market.



## June 2021 Sold Single Fam. Homes by Price Range for Boone County, MO

2020

Sold Listings	
List Price Range	# of Listings
\$0-\$99,999	13
\$100,000-\$149,999	31
\$150,000-\$199,999	82
\$200,000-\$249,999	64
\$250,000-\$299,999	56
\$300,000-\$349,999	24
\$350,000-\$399,999	19
\$400,000-\$449,999	13
\$450,000-\$499,999	4
\$500,000-\$749,999	12
\$750,000 - \$999,999	0
1000000+	1
<b>Total</b>	<b>319</b>

2021

Sold Listings	
List Price Range	# of Listings
\$0-\$99,999	7
\$100,000-\$149,999	24
\$150,000-\$199,999	44
\$200,000-\$249,999	79
\$250,000-\$299,999	53
\$300,000-\$349,999	39
\$350,000-\$399,999	30
\$400,000-\$449,999	26
\$450,000-\$499,999	13
\$500,000-\$749,999	30
\$750,000 - \$999,999	4
1000000+	1
<b>Total</b>	<b>350</b>

This representation is based in whole or in part on the data supplied by the Columbia Board of REALTORS® (CBOR). CBOR does not guarantee nor is in any way responsible for its accuracy. Data maintained by CBOR may not reflect all real estate activity in the market.



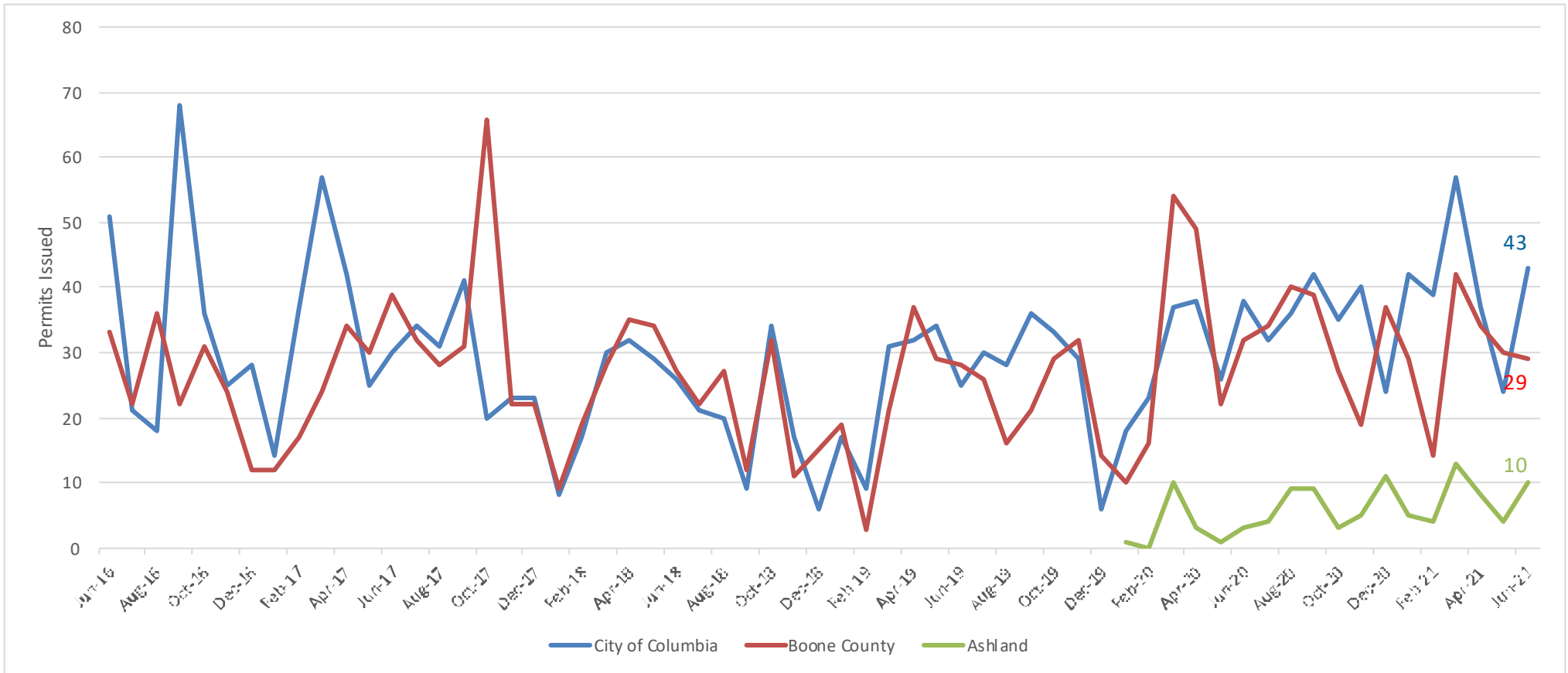
## June 2021 Single Family Residence Months Supply of Inventory by Price Range for Boone County, MO

Sold Listings		
List Price Range	# of Months Supply	DOM
\$100,000-\$149,999	0.89	19
\$150,000-\$199,999	0.64	4
\$200,000-\$249,999	0.29	11
\$250,000-\$299,999	0.62	14
\$300,000-\$349,999	0.70	10
\$350,000-\$399,999	0.81	15
\$400,000-\$449,999	0.23	12
\$450,000-\$499,999	0.71	15
\$500,000-\$749,999	1.36	14

This representation is based in whole or in part on the data supplied by the Columbia Board of REALTORS® (CBOR). CBOR does not guarantee nor is in any way responsible for its accuracy. Data maintained by CBOR may not reflect all real estate activity in the market.



## New Residential Single Family Detached Building Permits Issued By City of Columbia & Boone County, MO



This representation is based in whole or in part on the data supplied by the Columbia Board of REALTORS® (CBOR). CBOR does not guarantee nor is in any way responsible for its accuracy. Data maintained by CBOR may not reflect all real estate activity in the market.